

GROUP 52A

INTERIOR

CONTENTS

SEAT BELT DIAGNOSIS	52A-2	FRONT SEAT ASSEMBLY*	52A-15
SEAT BELT WARNING SYSTEM		REMOVAL AND INSTALLATION	52A-15
DIAGNOSIS	52A-2	DISASSEMBLY AND ASSEMBLY	52A-16
SPECIAL TOOLS	52A-2	INSPECTION	52A-19
INSTRUMENT PANEL ASSEMBLY*	52A-3	REAR SEAT ASSEMBLY	52A-20
REMOVAL AND INSTALLATION	52A-3	REMOVAL AND INSTALLATION	52A-20
DISASSEMBLY AND ASSEMBLY	52A-7	DISASSEMBLY AND ASSEMBLY	52A-23
FLOOR CONSOLE ASSEMBLY*	52A-8	FRONT SEAT BELT	52A-25
REMOVAL AND INSTALLATION	52A-8	REMOVAL AND INSTALLATION	52A-25
TRIMS	52A-9	INSPECTION	52A-27
REMOVAL AND INSTALLATION	52A-9	REAR SEAT BELT	52A-27
HEADLINING	52A-13	REMOVAL AND INSTALLATION	52A-27
REMOVAL AND INSTALLATION	52A-13	SPECIFICATIONS	52A-28
INSIDE REAR VIEW MIRROR	52A-14	FASTENER TIGHTENING	
REMOVAL AND INSTALLATION	52A-14	SPECIFICATIONS	52A-28

WARNINGS REGARDING SERVICING OF SUPPLEMENTAL RESTRAINT SYSTEM (SRS) EQUIPPED VEHICLES

WARNING

- *Improper service or maintenance of any component of the SRS, or any SRS-related component, can lead to personal injury or death to service personnel (from inadvertent firing of the air bag) or to the driver and passenger (from rendering the SRS inoperative).*
- *Service or maintenance of any SRS component or SRS-related component must be performed only at an authorized MITSUBISHI dealer.*
- *MITSUBISHI dealer personnel must thoroughly review this manual, and especially its GROUP 52B - Supplemental Restraint System (SRS) before beginning any service or maintenance of any component of the SRS or any SRS-related component.*

NOTE

The SRS includes the following components: SRS air bag control unit, SRS warning light, front impact sensors, air bag module, clock spring, and interconnecting wiring. Other SRS-related components (that may have to be removed/installed in connection with SRS service or maintenance) are indicated in the table of contents by an asterisk (*).

SEAT BELT DIAGNOSIS

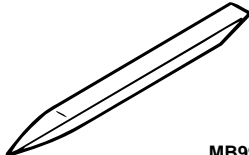
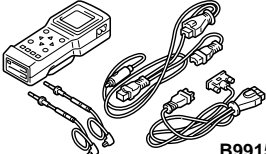
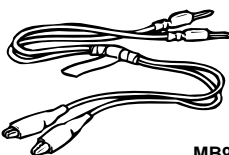

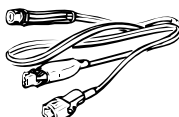
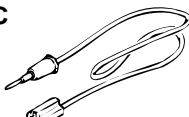

SEAT BELT WARNING SYSTEM DIAGNOSIS

M1521000700067

The seat belt warning system is controlled by the Simplified Wiring System (SWS). For troubleshooting, refer to GROUP 54B [P.54B-252](#).

SPECIAL TOOLS

M1521000600060

TOOL	TOOL NUMBER AND NAME	SUPERSESSION	APPLICATION
 MB990784	MB990784 Ornament remover	General service tool	Removal of switch, trim, etc.
 B991502	MB991502 Scan tool (MUT-II)	MB991496-OD	Checking the ETACS-ECU input signal
 MB991529	MB991529 Diagnostic trouble code check harness	Tool not necessary if scan tool (MUT-II) is available	Checking the ETACS-ECU input signal (When using the voltmeter)
<div>A</div>  <div>B</div>  <div>C</div>  <div>D</div>  MB991223AE	MB991223 A: MB991219 B: MB991220 C: MB991221 D: MB991222 Harness set A: Test harness B: LED harness C: LED harness D: Probe	MB991223	Measurement of terminal voltage

INSTRUMENT PANEL ASSEMBLY


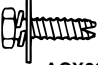


REMOVAL AND INSTALLATION

M1521001700134

⚠ WARNING

For removal and installation of the passenger's side air bag module, always observe the service procedures described in GROUP 52B, Air Bag Module and Clock Spring P.52B-144.

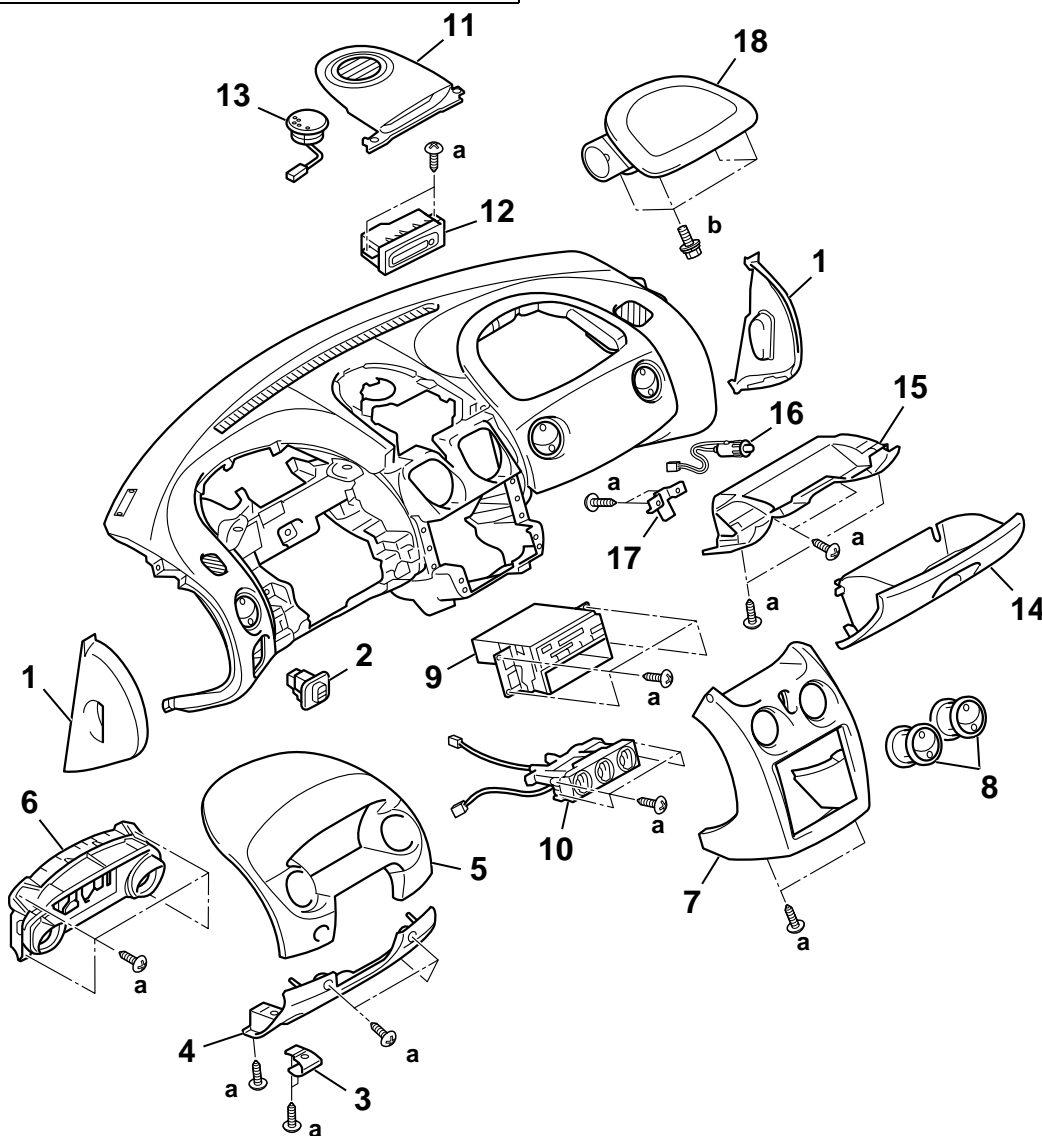
The bolts and screws described below are used for installation of the instrument panel. They are indicated by symbols in the illustration.

NAME	SYMBOL	SIZE (D × L) mm (in)	COLOR	SHAPE
Tapping screw	a	5 × 16 (0.20 × 0.63)	-	 ACX01282
Washer assembled bolt	b	6 × 16 (0.24 × 0.63)	-	 ACX02229
	c	6 × 20 (0.24 × 0.79)		
	d	6 × 16 (0.24 × 0.63)	-	 ACX00614
Washer assembled bolt (ground)	e	6 × 16 (0.24 × 0.63)	-	 ACX00614
	f	6 × 20 (0.24 × 0.79)		

D: Thread diameter L: Effective thread length

Pre-removal and Post-installation Operation

- Floor Console Assembly Removal and Installation (Refer to [P.52A-8.](#))
- Steering Wheel and Shaft Removal and Installation (Refer to GROUP 37A, Steering Wheel and Shaft [P.37A-21.](#))
- Front Pillar Trim Removal Installation (Refer to [P.52A-9.](#))



AC006055 AB

REMOVAL STEPS

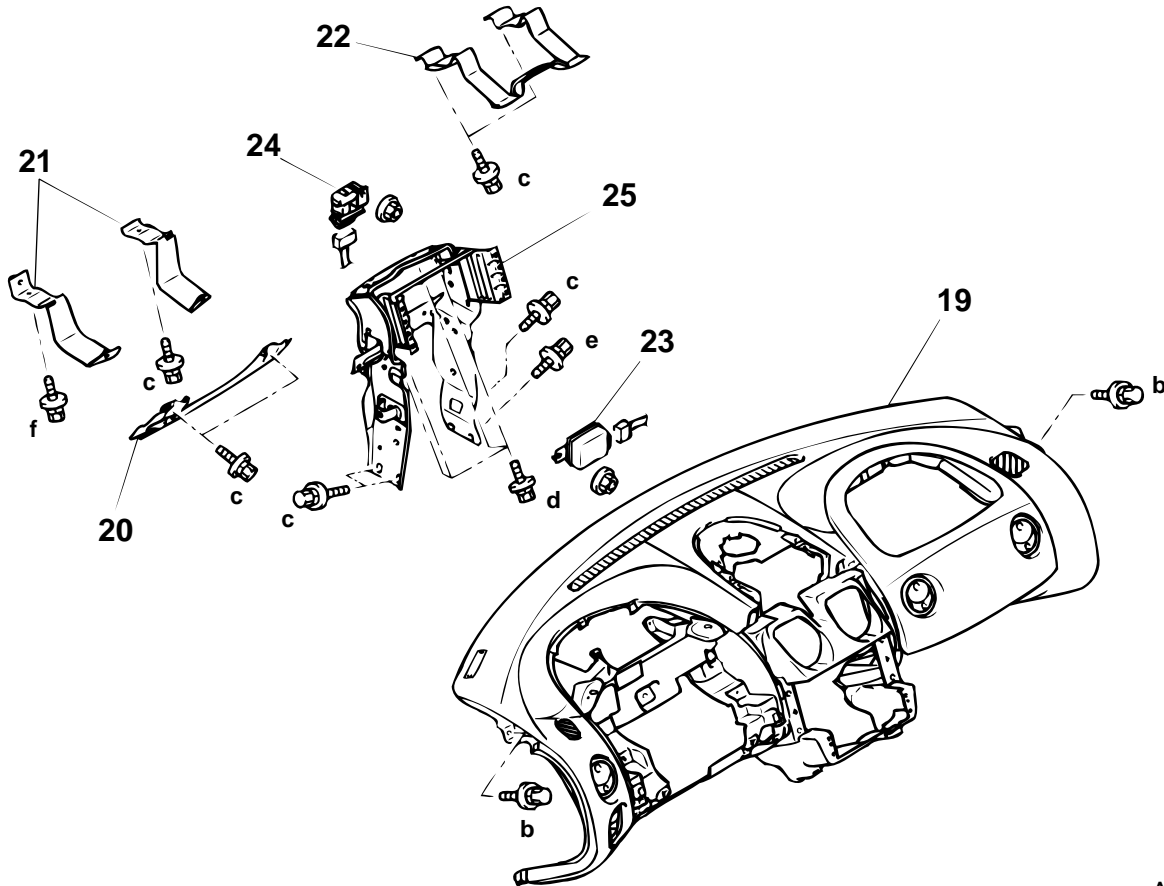
1. INSTRUMENT PANEL SIDE COVER
2. FOG LAMP SWITCH ASSEMBLY
3. HOOD LOCK RELEASE HANDLE
4. INSTRUMENT PANEL UNDER COVER
5. METER BEZEL ASSEMBLY
6. COMBINATION METER
7. CENTER PANEL ASSEMBLY
8. AIR OUTLET (CENTER SIDE)
9. RADIO AND TAPE PLAYER ASSEMBLY

REMOVAL STEPS (Continued)

10. HEATER CONTROL ASSEMBLY (REFER TO GROUP 55, HEATER CONTROL ASSEMBLY AND A/C SWITCH [P.55-31.](#))
11. CENTER HOOD
12. MULTI CENTER DISPLAY
13. CENTER SPEAKER
14. GLOVE BOX, OUTER
15. GLOVE BOX, INNER
16. GLOVE BOX LAMP SWITCH ASSEMBLY

REMOVAL STEPS (Continued)

17. GLOVE BOX STRIKER
18. AIR BAG MODULE (PASSENGER'S SIDE) (REFER TO GROUP 52B, AIR BAG MODULES AND CLOCK SPRING [P.52B-144.](#))



AC003331 AC

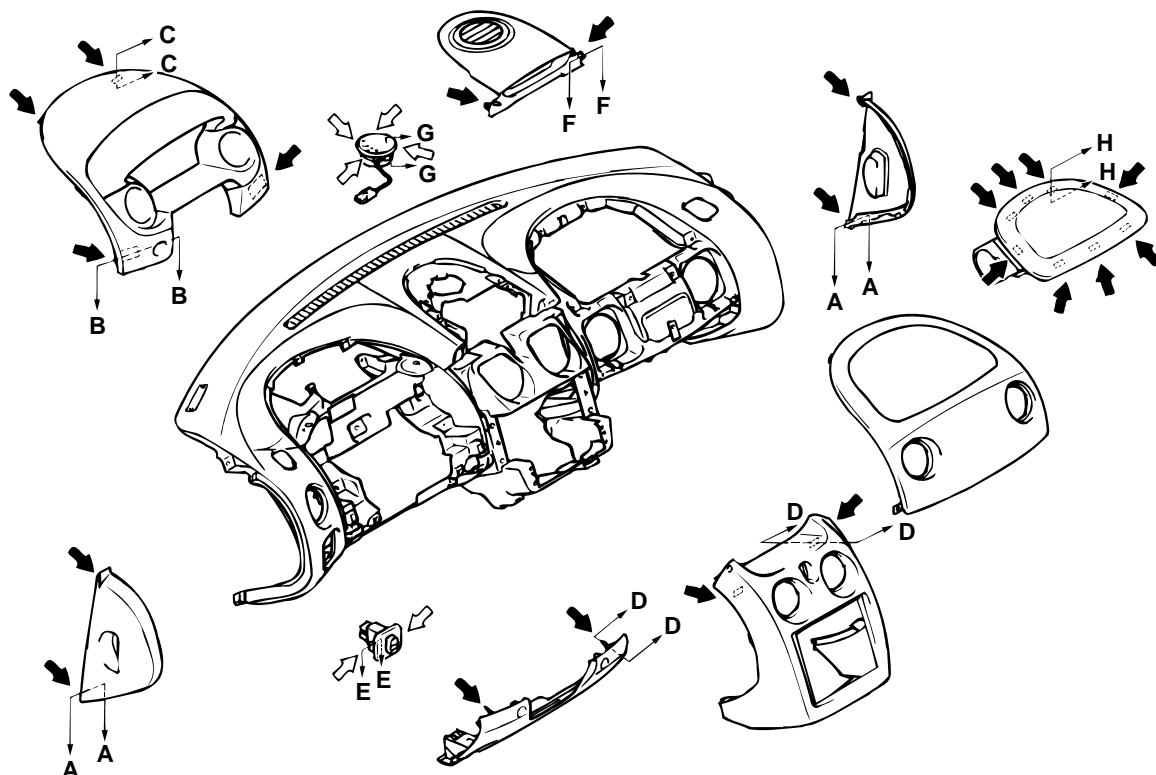
REMOVAL STEPS

19. INSTRUMENT PANEL ASSEMBLY
20. INSTRUMENT PANEL REINFORCEMENT
21. KNEE ABSORBER (DRIVER'S SIDE)

REMOVAL STEPS (Continued)

22. KNEE ABSORBER (PASSENGER'S SIDE)
23. AUTO-CRUISE CONTROL-ECU
24. IMMOBILIZER-ECU
25. INSTRUMENT PANEL CENTER REINFORCEMENT

CLIP AND CLAW POSITIONS



NOTE

➡: Clip position

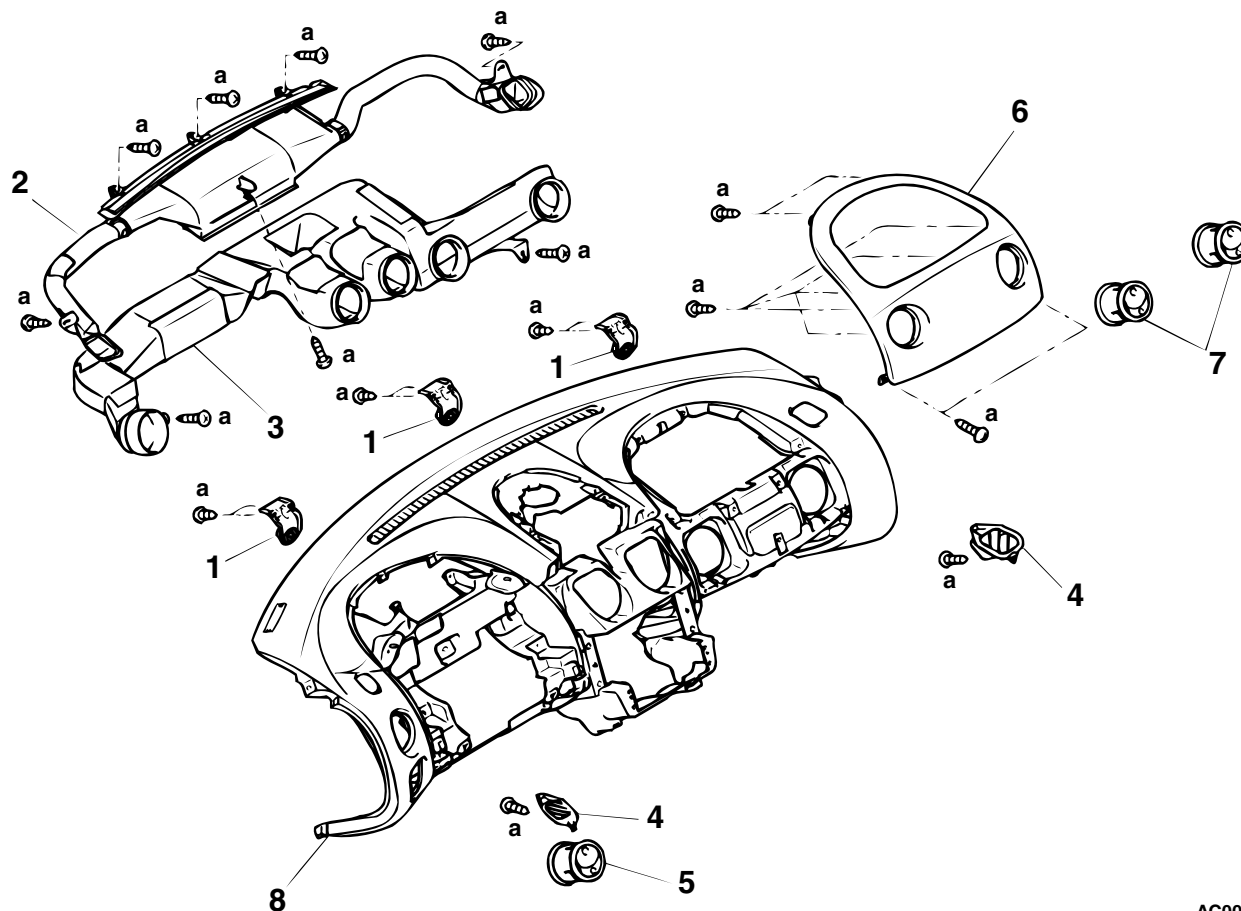
↔: Claw position

<p>SECTION A – A</p> <p>CLIP</p> <p>INSTRUMENT PANEL</p> <p>INSTRUMENT PANEL SIDE COVER</p>	<p>SECTION B – B</p> <p>CLIP</p> <p>INSTRUMENT PANEL</p> <p>METER BEZEL</p>	<p>SECTION C – C</p> <p>METER BEZEL</p> <p>CLIP</p> <p>INSTRUMENT PANEL</p>	<p>SECTION D – D</p> <p>CLIP</p> <p>COVER</p> <p>INSTRUMENT PANEL</p>
<p>SECTION E – E</p> <p>INSTRUMENT PANEL</p> <p>CLAW</p> <p>FOGLIGHT SWITCH ASSEMBLY</p>	<p>SECTION F – F</p> <p>CLIP</p> <p>INSTRUMENT PANEL</p> <p>CENTER HOOD</p>	<p>SECTION G – G</p> <p>CENTER SPEAKER</p> <p>CLAW</p> <p>INSTRUMENT PANEL</p>	<p>SECTION H – H</p> <p>AIR BAG MODULE</p> <p>PAD</p> <p>CLIP</p>

AC003332AB

DISASSEMBLY AND ASSEMBLY

M1521001900064



AC000328 AB

DISASSEMBLY STEPS

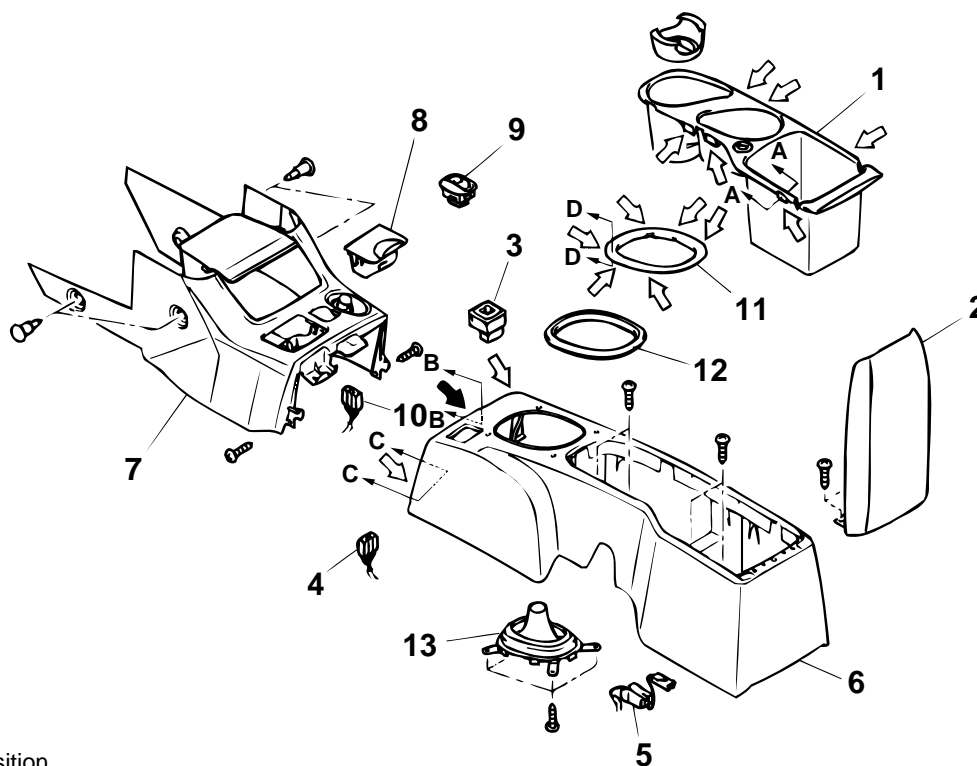
1. INSTRUMENT PANEL UPPER BRACKET
2. DEFROSTER NOZZLE ASSEMBLY
3. DISTRIBUTION DUCT
4. SIDE DEFROSTER GRILLE

DISASSEMBLY STEPS

5. AIR OUTLET (DRIVER'S SIDE)
6. PAD (PASSENGER'S SIDE)
7. AIR OUTLET (PASSENGER'S SIDE)
8. INSTRUMENT PANEL

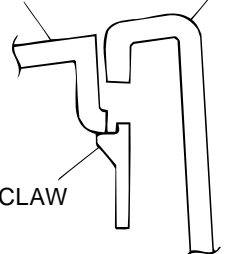
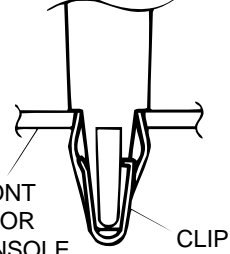
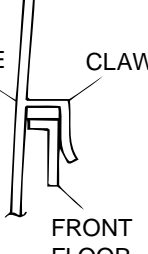
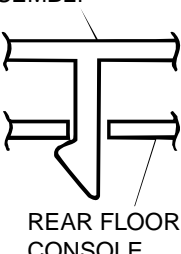
FLOOR CONSOLE ASSEMBLY**REMOVAL AND INSTALLATION**

M1521002200068

**NOTE**

➡ : Clip position

↪ : Claw position

SECTION A – A	SECTION B – B	SECTION C – C	SECTION D – D
<p>REAR FLOOR CONSOLE</p> <p>CLAW</p> <p>CONSOLE BOX ASSEMBLY</p> 	<p>REAR FLOOR CONSOLE</p> <p>FRONT FLOOR CONSOLE</p> <p>CLIP</p> 	<p>REAR FLOOR CONSOLE</p> <p>CLAW</p> <p>FRONT FLOOR CONSOLE</p> 	<p>SHIFT LEVER PANEL ASSEMBLY</p> <p>REAR FLOOR CONSOLE</p> 

AC003043AB

REMOVAL STEPS

1. CONSOLE BOX ASSEMBLY
2. CONSOLE LID ASSEMBLY <EXCEPT ECLIPSE "RS">
3. DOOR MIRROR CONTROL SWITCH
4. DOOR MIRROR CONTROL SWITCH HARNESS
5. ACCESSORY SOCKET HARNESS
6. REAR FLOOR CONSOLE
7. FRONT FLOOR CONSOLE

REMOVAL STEPS (Continued)

8. ASHTRAY
9. FOLDING TOP SWITCH <ECLIPSE SPYDER>
10. FOLDING TOP SWITCH HARNESS <ECLIPSE SPYDER>
11. SHIFT LEVER PANEL ASSEMBLY <M/T>
12. GARNISH <A/T>
13. SHIFT LEVER BOOT <M/T>

TRIMS

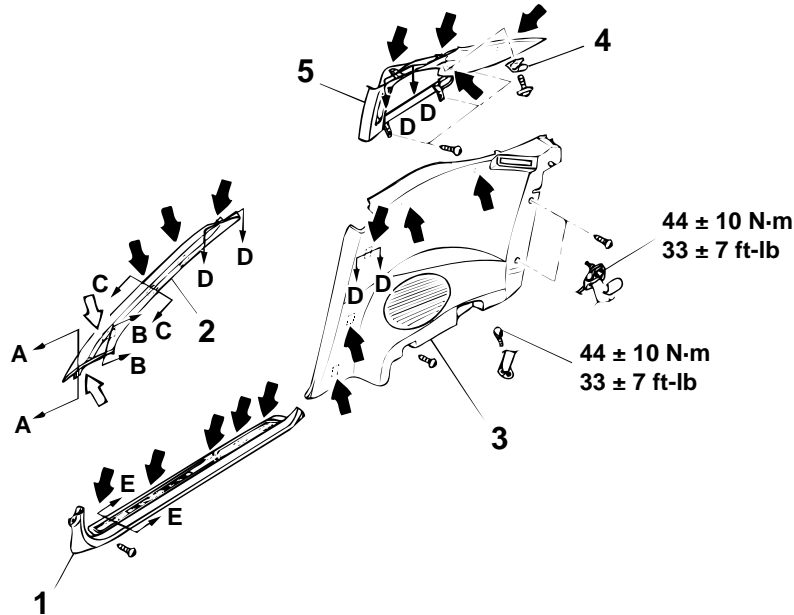
REMOVAL AND INSTALLATION

M1521001100068

<ECLIPSE>

Pre-removal and Post-installation Operation

- Rear Seat Cushion and Installation (Refer to [P.52A-20.](#))



NOTE

- : Clip position
 : Claw position

SECTION A – A 	SECTION B – B 	SECTION C – C 	SECTION D – D
SECTION E – E 			

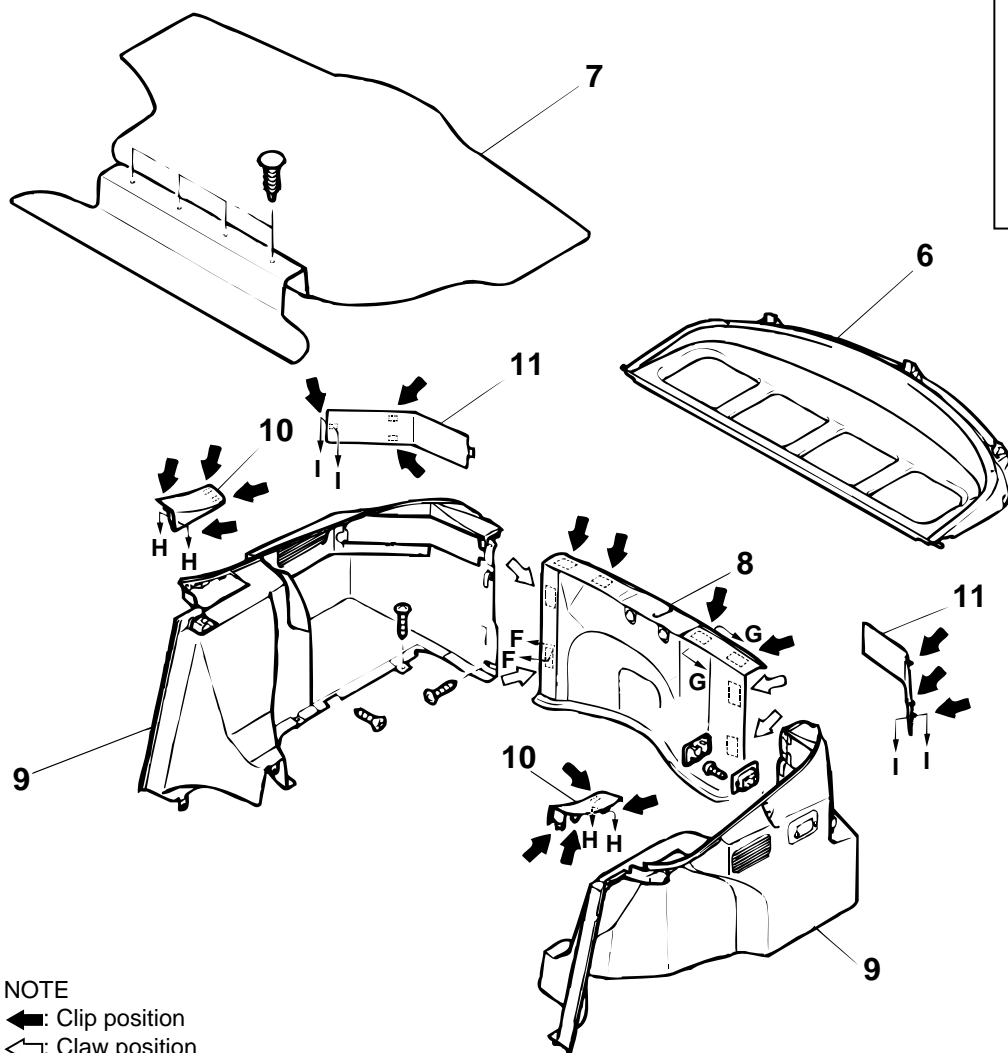
AC003034AB

TRIMS REMOVAL STEPS

- FRONT SCUFF PLATE
- FRONT PILLAR TRIM
- QUARTER TRIM, LOWER

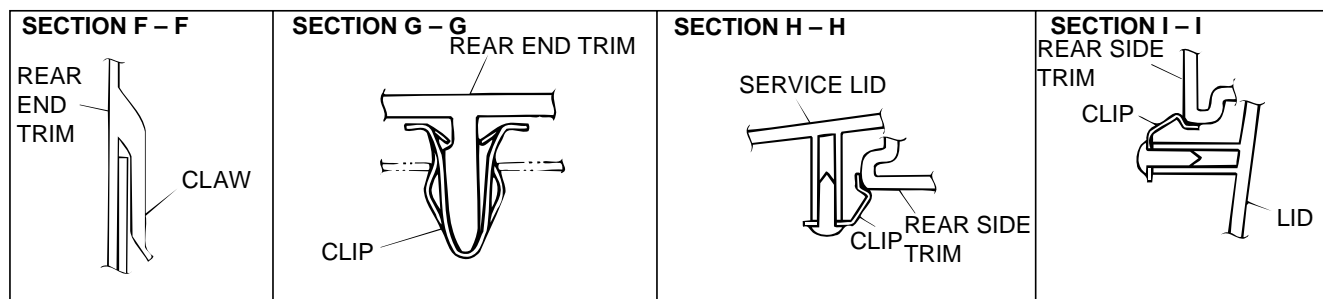
TRIMS REMOVAL STEPS

- COAT HANGER (LH ONLY)
- QUARTER TRIM, UPPER



NOTE

- ←: Clip position
 ⇐: Claw position



AC003035AB

TRIMS REMOVAL STEPS

6. SHELF TRIM
7. LUGGAGE COMPARTMENT FLOOR CARPET ASSEMBLY
8. REAR END TRIM
9. REAR SIDE TRIM
10. SERVICE LID
11. LID

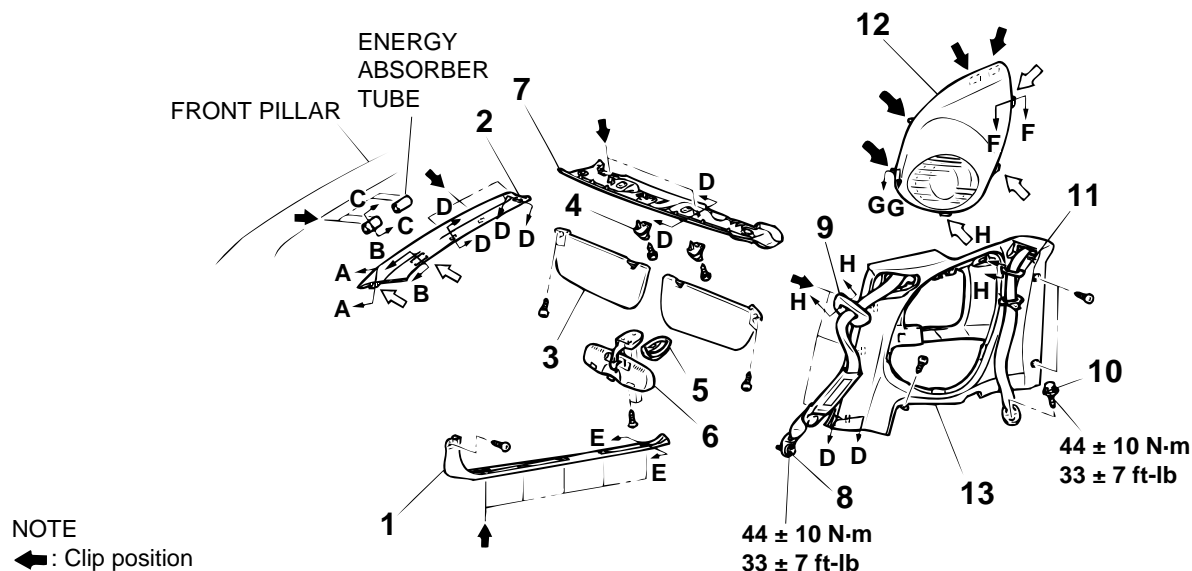
TETHER ANCHOR REMOVAL STEPS

12. COVER
13. TETHER ANCHOR BRACKET
14. SPACER 10mm (0.4 inch)
15. SPACER 7mm (0.3 inch)
16. FIBER WASHER

<ECLIPSE SPYDER>

Pre-removal and Post-installation Operation

- Rear Seat Cushion and Installation (Refer to P.52A-20.)



SECTION A – A 	SECTION B – B 	SECTION C – C 	SECTION D – D
SECTION E – E 	SECTION F – F 	SECTION G – G 	SECTION H – H

AC003044AB

FRONT PILLAR TRIM AND FRONT ROOF RAIL TRIM REMOVAL STEPS

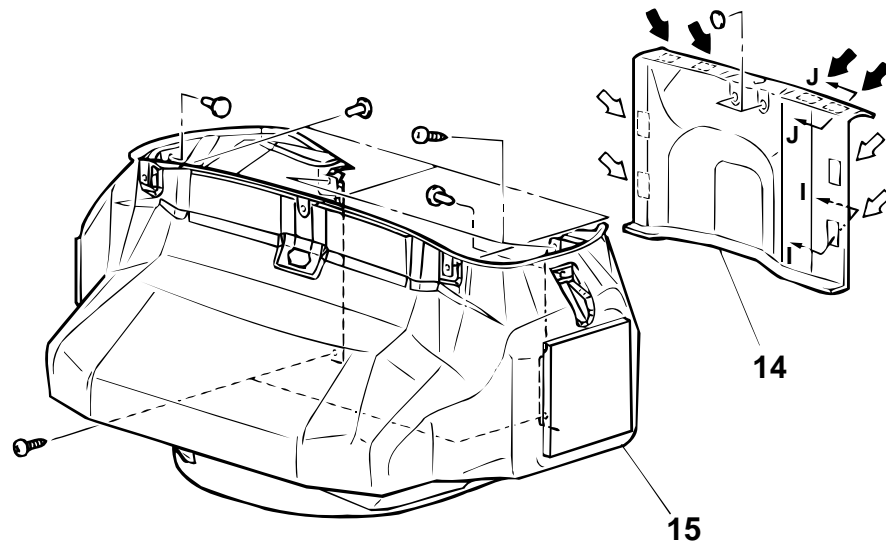
- FRONT SCUFF PLATE
- FRONT PILLAR TRIM
- SUN VISOR
- SUN VISOR HOLDER
- INSIDE REAR VIEW MIRROR STAY COVER
- INSIDE REAR VIEW MIRROR
- FRONT ROOF RAIL TRIM

QUARTER TRIM REMOVAL STEPS

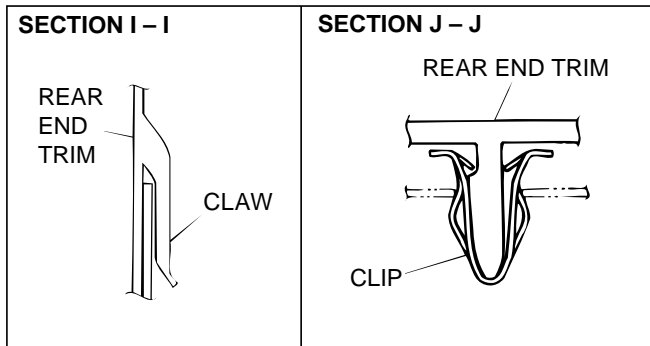
- DOOR INNER REAR OPENING WEATHERSTRIP (REFER TO GROUP 42 – DOOR INNER OPENING WEATHERSTRIP P.42-65.)
- REAR SEAT (REFER TO P.52A-20.)
- FRONT OUTER SEAT BELT ANCHOR PLATE
- SEAT BELT GUIDE <FRONT>
- REAR OUTER SEAT BELT ANCHOR PLATE

**QUARTER TRIM REMOVAL
STEPS (Continued)**

11. SEAT BELT GUIDE <REAR>
12. REAR SPEAKER GARNISH
13. QUARTER TRIM, LOWER

**NOTE**

- ◀: Clip position
 ◀◀: Claw position



AC003045AB

14. REAR END TRIM
15. TRUNK COMPARTMENT TRIM

HEADLINING

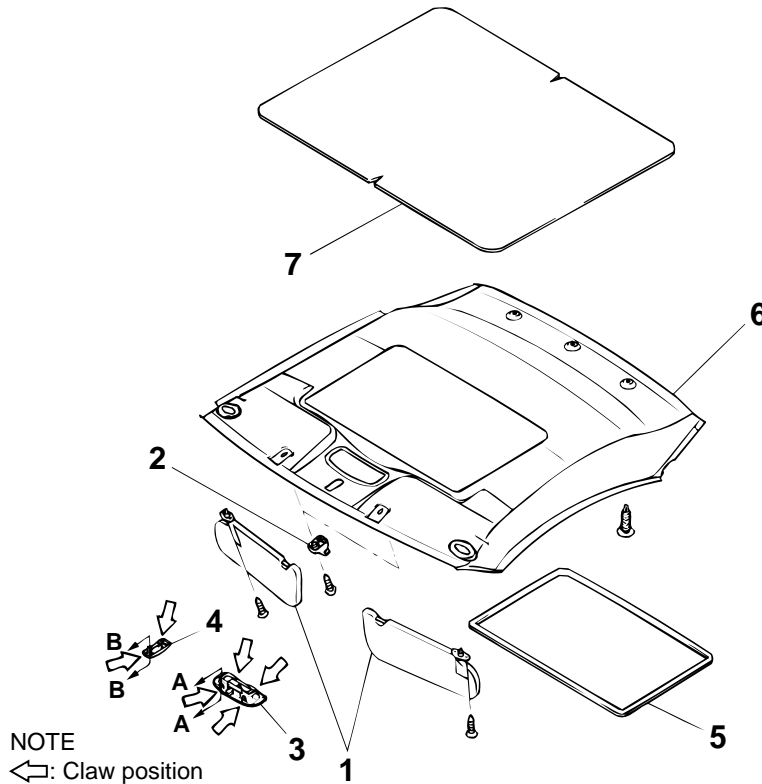
REMOVAL AND INSTALLATION

M1521001400069

<ECLIPSE>

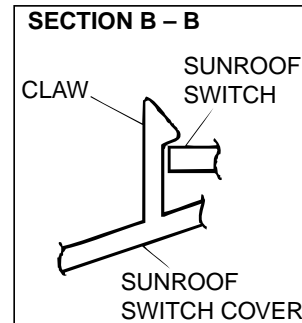
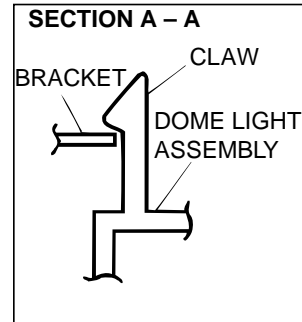
Pre-removal and Post-installation Operation

² Front Pillar Trim and Quarter Trim, Upper Removal and Installation (Refer to P.52A-9.)



REMOVAL STEPS

1. SUN VISOR ASSEMBLY
2. SUN VISOR HOLDER
3. DOOM LIGHT ASSEMBLY
<VEHICLES WITHOUT SUNROOF>
4. SUNROOF SWITCH COVER
<VEHICLES WITH SUNROOF>



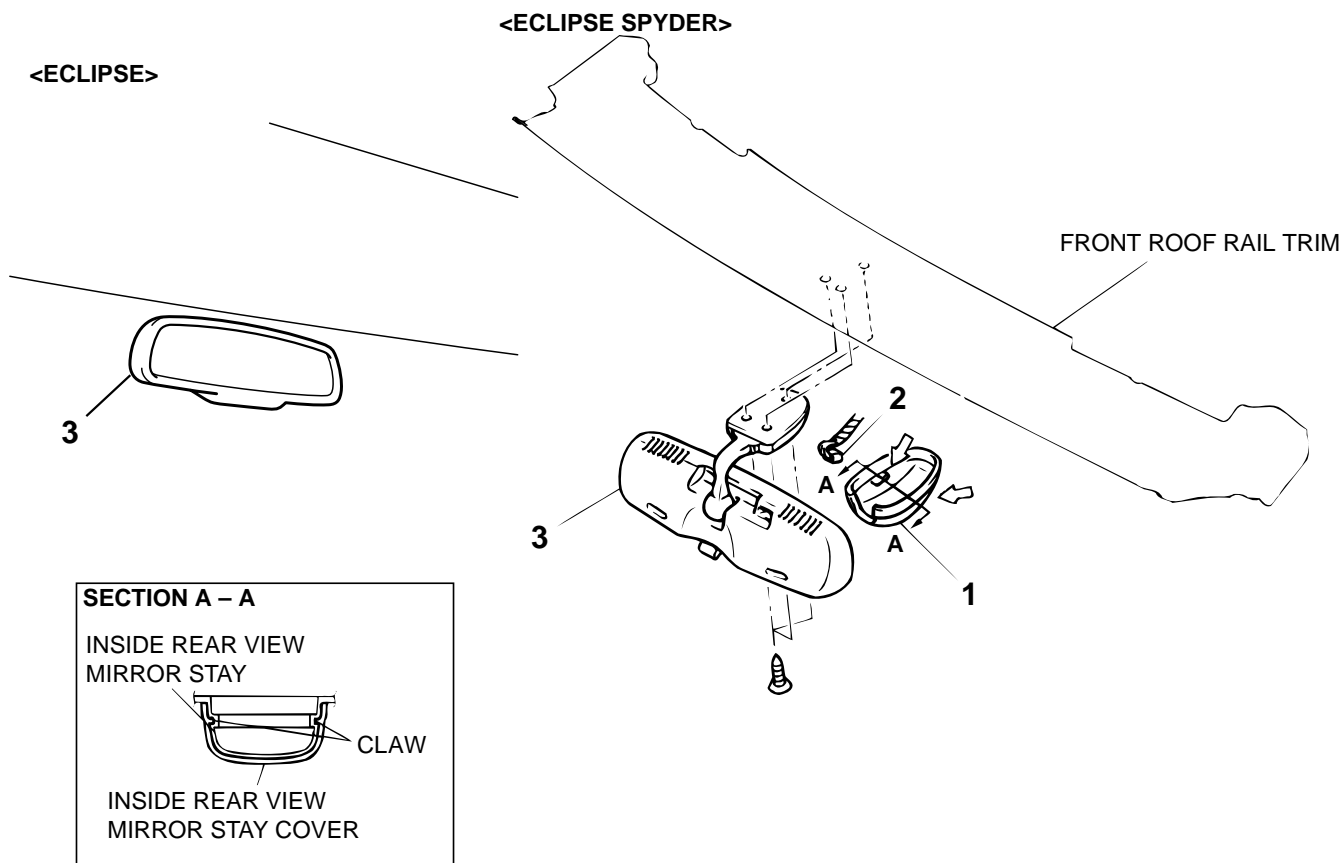
AC003036AB

REMOVAL STEPS (Continued)

5. HEADLINING TRIM <VEHICLES WITH SUNROOF>
6. HEADLINING
7. ROOF PAD <VEHICLES WITHOUT SUNROOF>

INSIDE REAR VIEW MIRROR**REMOVAL AND INSTALLATION**

M1521002700063



NOTE

←: Claw position

AC003275AB

REMOVAL STEPS <ECLIPSE>

- COMPASS SENSOR
- 3. INSIDE REAR VIEW MIRROR

REMOVAL STEPS <ECLIPSE SPYDER>

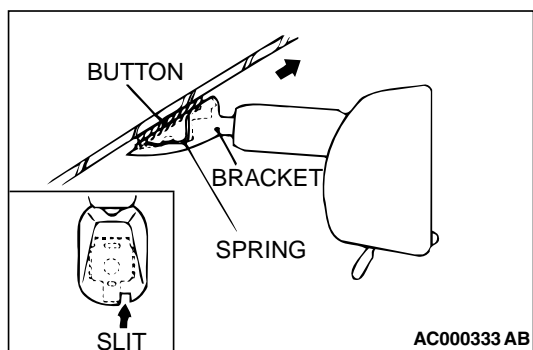
1. INSIDE REAR VIEW MIRROR STAY COVER
2. HARNESS CONNECTOR
3. INSIDE REAR VIEW MIRROR

<<A>>

REMOVAL SERVICE POINT**<<A>> INSIDE REAR VIEW MIRROR REMOVAL**

Insert a narrow flat-tip screwdriver into the slit in the inside rear view mirror in the direction of the arrow in the illustration.

NOTE: While the spring is pushed in, connection between the spring and the pawl of the button is released.



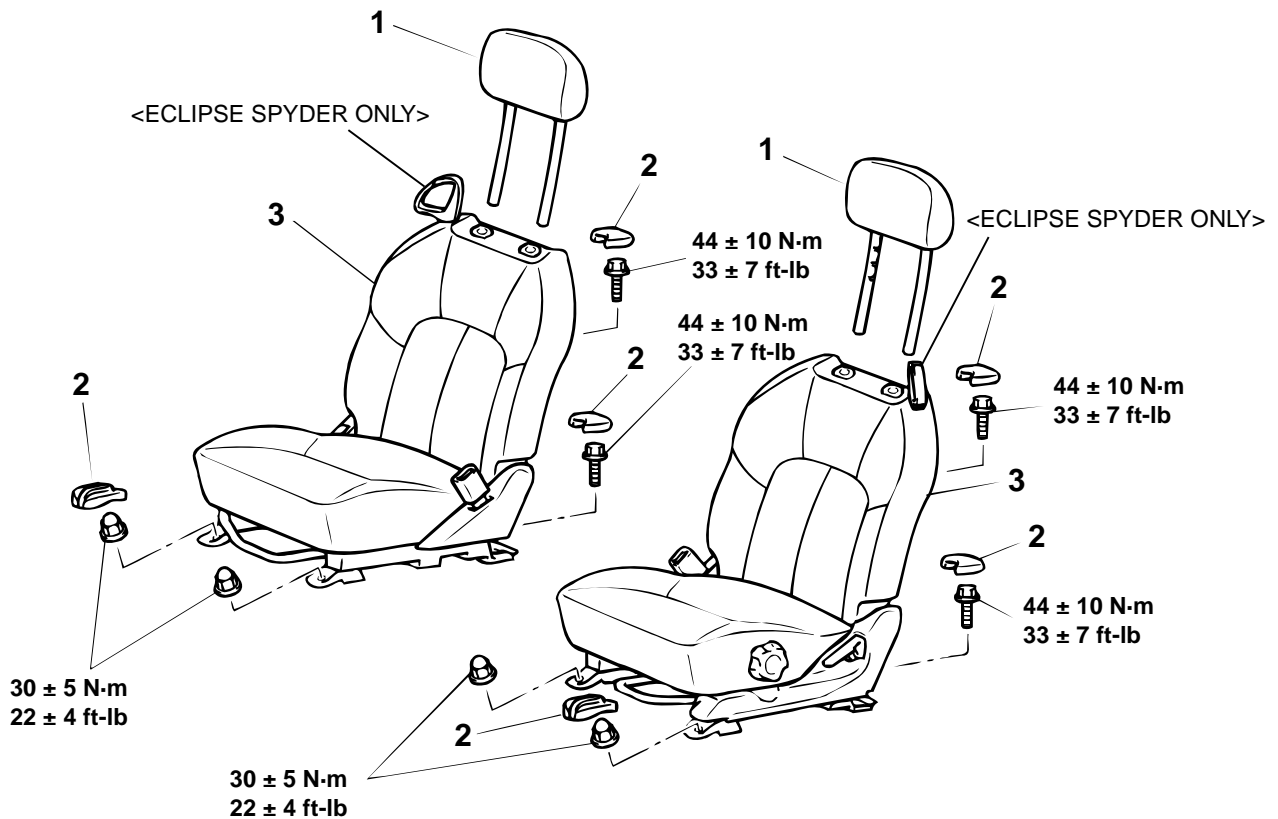
FRONT SEAT ASSEMBLY

REMOVAL AND INSTALLATION

M1522001300065

⚠ WARNING

Before removing a seat equipped with a side air bag module, refer to **GROUP 52B, SRS Service Precautions P.52B-17**.



AC003047AB

FRONT SEAT ASSEMBLY REMOVAL STEPS

- HARNESS CONNECTOR
- 2. SEAT ANCHOR COVER
- >>A<< 3. FRONT SEAT ASSEMBLY

INSTALLATION SERVICE POINT

>>A<< FRONT SEAT ASSEMBLY INSTALLATION

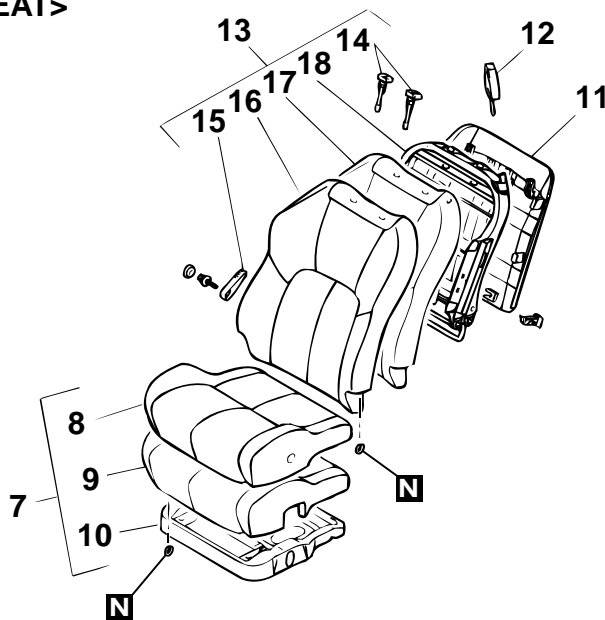
First install all of the front seat assembly mounting nuts and bolts, and then tighten them to the specified torque.

DISASSEMBLY AND ASSEMBLY

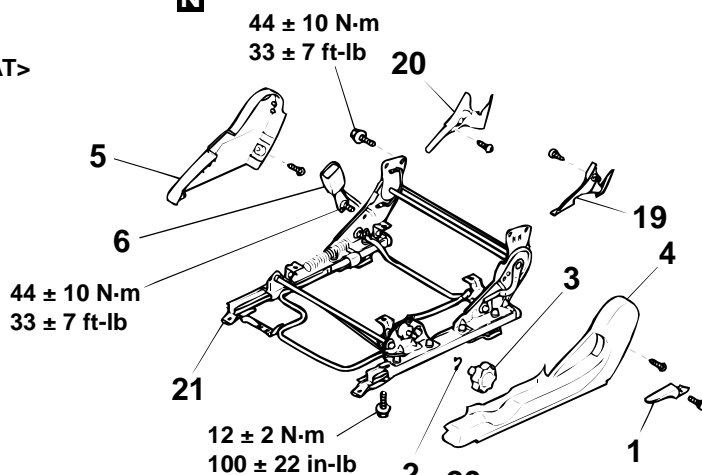
M1522001500081

⚠ WARNING**Do not disassemble a front seatback assembly with built-in side air bag module.**

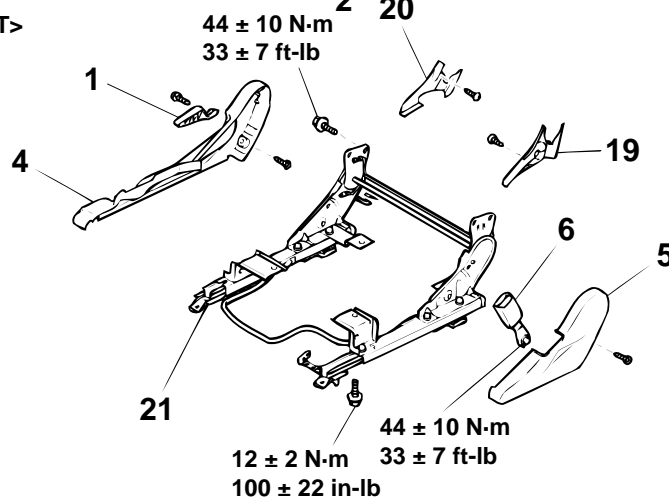
<WITHOUT POWER SEAT>



<DRIVER'S SEAT>



<PASSENGER'S SEAT>

**DISASSEMBLY STEPS**

1. RECLINING ADJUSTER KNOB
2. CLIP <DRIVER'S SEAT>

DISASSEMBLY STEPS (Continued)

3. HEIGHT ADJUSTER KNOB
<DRIVER'S SEAT>

AC003048AB

DISASSEMBLY STEPS (Continued)

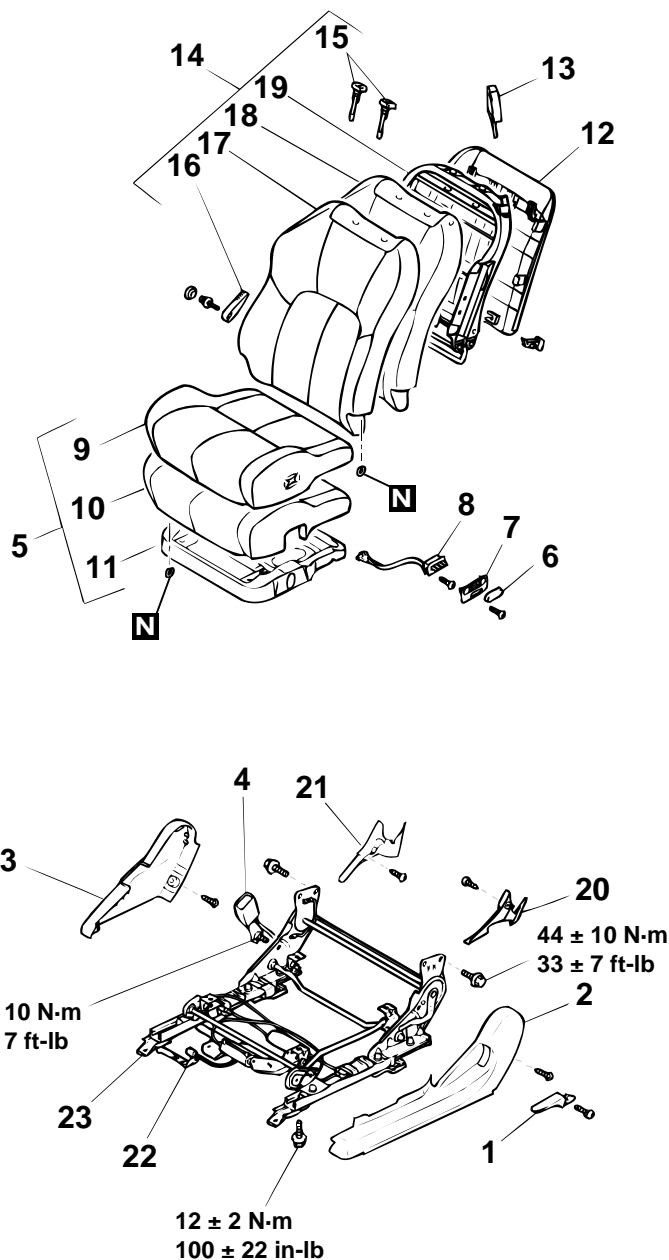
4. FRONT SEAT SHIELD COVER
5. FRONT SEAT SHIELD COVER
6. INNER SEAT BELT
7. FRONT SEAT CUSHION ASSEMBLY
8. FRONT SEAT CUSHION COVER
9. FRONT SEAT CUSHION PAD
10. FRONT SEAT CUSHION FRAME
11. FRONT SEATBACK PANEL
12. SEAT BELT GUIDE <ECLIPSE
SPYDER ONLY>
13. FRONT SEATBACK ASSEMBLY
14. HEADRESTRAINT GUIDE

<<A>>

DISASSEMBLY STEPS (Continued)

15. LUMBAR SUPPORT KNOB
<DRIVER'S SEAT>
16. FRONT SEATBACK COVER
17. FRONT SEATBACK PAD
18. FRONT SEATBACK FRAME
<VEHICLES WITHOUT SRS SIDE
AIR BAG>
19. FRONT SEAT INNER COVER
20. FRONT SEAT INNER COVER
21. FRONT SEAT ADJUSTER
ASSEMBLY

<POWER SEAT>



AC003049AB

DISASSEMBLY STEPS

1. RECLINING ADJUSTER KNOB
2. FRONT SEAT SHIELD COVER
3. FRONT SEAT SHIELD COVER
4. INNER SEAT BELT
5. FRONT SEAT CUSHION ASSEMBLY
6. FRONT SEAT SLIDE ADJUSTER LEVER
7. GARNISH
8. POWER SEAT SWITCH
9. FRONT SEAT CUSHION COVER
10. FRONT SEAT CUSHION PAD
11. FRONT SEAT CUSHION FRAME
12. FRONT SEATBACK PANEL
13. SEAT BELT GUIDE <ECLIPSE SPYDER ONLY>

DISASSEMBLY STEPS (Continued)

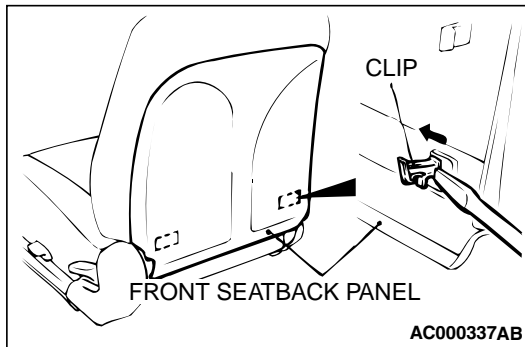
14. FRONT SEATBACK ASSEMBLY
15. HEADRESTRAINT GUIDE
16. LUMBAR SUPPORT KNOB
17. FRONT SEATBACK COVER
18. FRONT SEATBACK PAD
19. FRONT SEATBACK FRAME
<VEHICLES WITHOUT SRS SIDE AIR BAG>
20. FRONT SEAT INNER COVER
21. FRONT SEAT INNER COVER
22. POWER SEAT HARNESS
23. POWER SEAT ADJUSTER ASSEMBLY

<<A>>

DISASSEMBLY SERVICE POINT

<<A>> FRONT SEATBACK PANEL REMOVAL

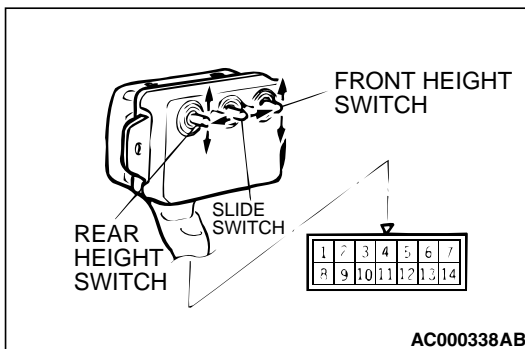
1. Using a screwdriver or similar tool, push in the clip of the front seatback panel lower portion to remove it.
2. Pull down the front seatback panel to remove it.



INSPECTION

M1522001600077

POWER SEAT SWITCH CONTINUITY CHECK

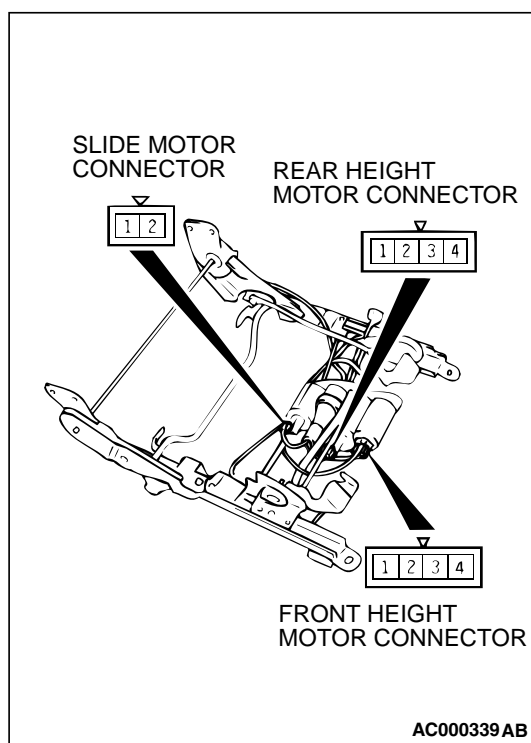


SWITCH POSITION		TESTER CONNECTION	SPECIFIED CONDITION
Slide switch	Forward	2 – 3, 4 – 14	Less than 2 ohm
	Backward	1 – 4, 3 – 14	Less than 2 ohm
Front height switch	Up	9 – 10, 11 – 14	Less than 2 ohm
	Down	8 – 11, 10 – 14	Less than 2 ohm
Rear height switch	Up	6 – 12, 7 – 14	Less than 2 ohm
	Down	5 – 7, 12 – 14	Less than 2 ohm
All switches	OFF	1 – 2 – 3 – 4 – 5 – 6 – 7 – 8 – 9 – 10 – 11 – 12 – 13 – 14	Open circuit

POWER SEAT MOTOR OPERATION CHECK

Inspect the operation of each motor according to the following procedures.

1. Disconnect the connector for each motor.



2. When the battery is connected directly to the motor terminals, check if the motors run smoothly, and check if each setting mechanism runs in the direction shown in the table below for each motor.
 - (1) Connect the battery power source to the terminal 3 and ground the terminal 4 for the front/rear height down side and connect the battery power source to the terminal 4 and ground the terminal 3 for the front/rear height up side.
 - (2) Connect the battery power source to the terminal 1 and ground the terminal 2 for the slide backward side and connect the battery power source to the terminal 2 and ground the terminal 1 for the slide forward side.
3. If there is an abnormality, replace the power seat adjuster assembly.

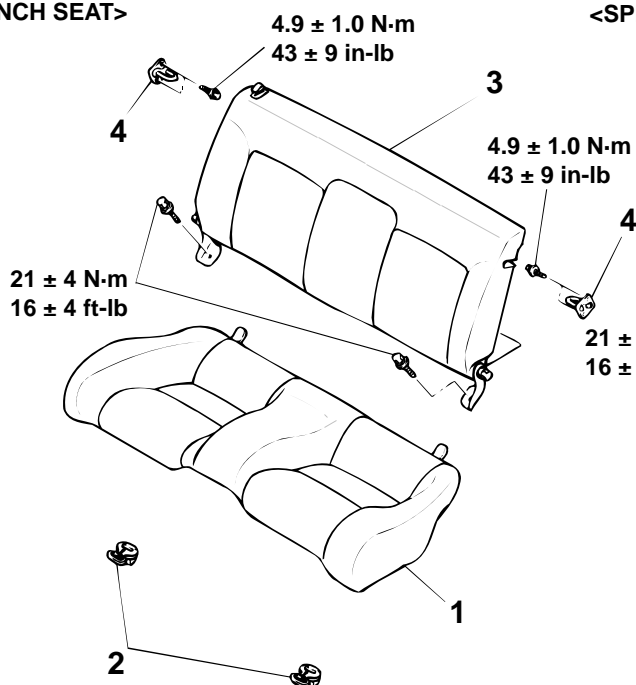
REAR SEAT ASSEMBLY

REMOVAL AND INSTALLATION

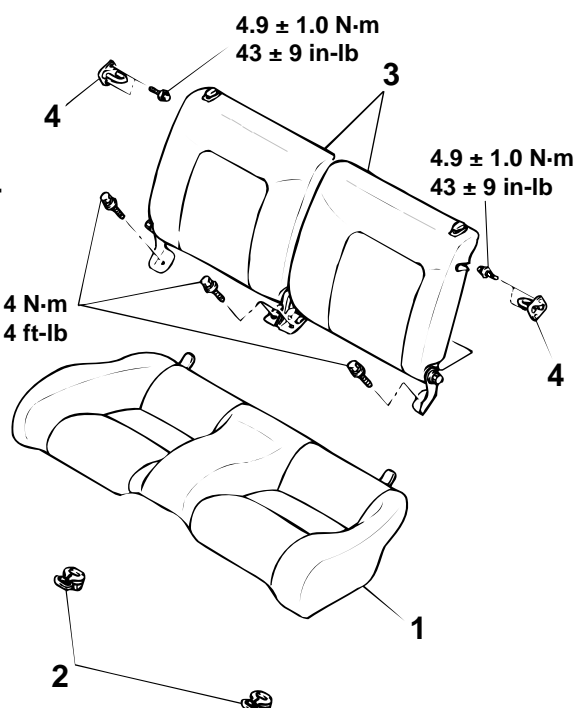
M1522001800060

<ECLIPSE>

<BENCH SEAT>



<SPLIT SEAT>



AC003040AB

<<A>>

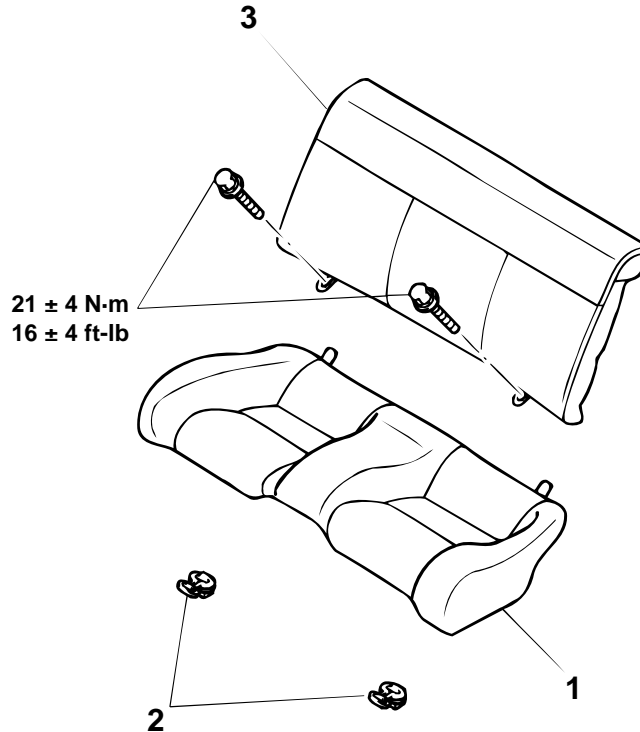
REMOVAL STEPS

1. REAR SEAT CUSHION
2. REAR SEAT STOPPER
3. REAR SEATBACK

STRIKER REMOVAL STEPS

- QUARTER TRIM, LOWER (REFER TO P.52A-9.)
- 4. STRIKER

<ECLIPSE SPYDER>



AC003050AB

<<A>>

REMOVAL STEPS

1. REAR SEAT CUSHION

REMOVAL STEPS (Continued)

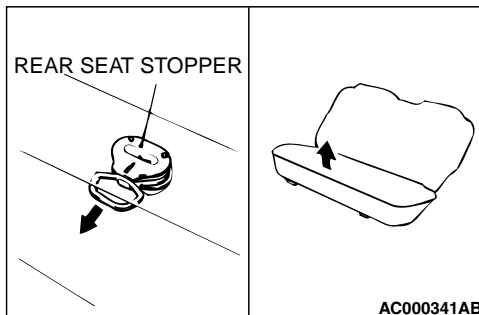
2. REAR SEAT STOPPER
3. REAR SEATBACK

>>A<<

REMOVAL SERVICE POINT

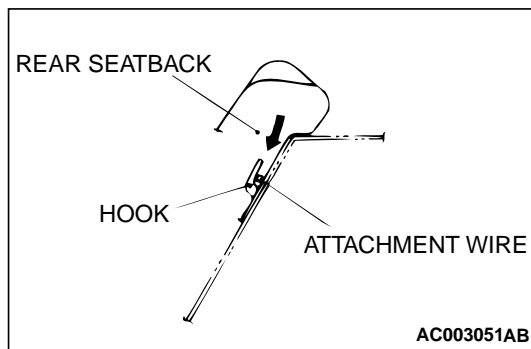
<<A>> REAR SEAT CUSHION REMOVAL

While pulling the rear seat stopper pulled, lift up the seat cushion to remove it.



INSTALLATION SERVICE POINT**>>A<< REAR SEATBACK INSTALLATION**

Push the rear seatback in the direction indicated in the illustration; then securely attach the attachment wire to the body side hook and install the rear seatback.

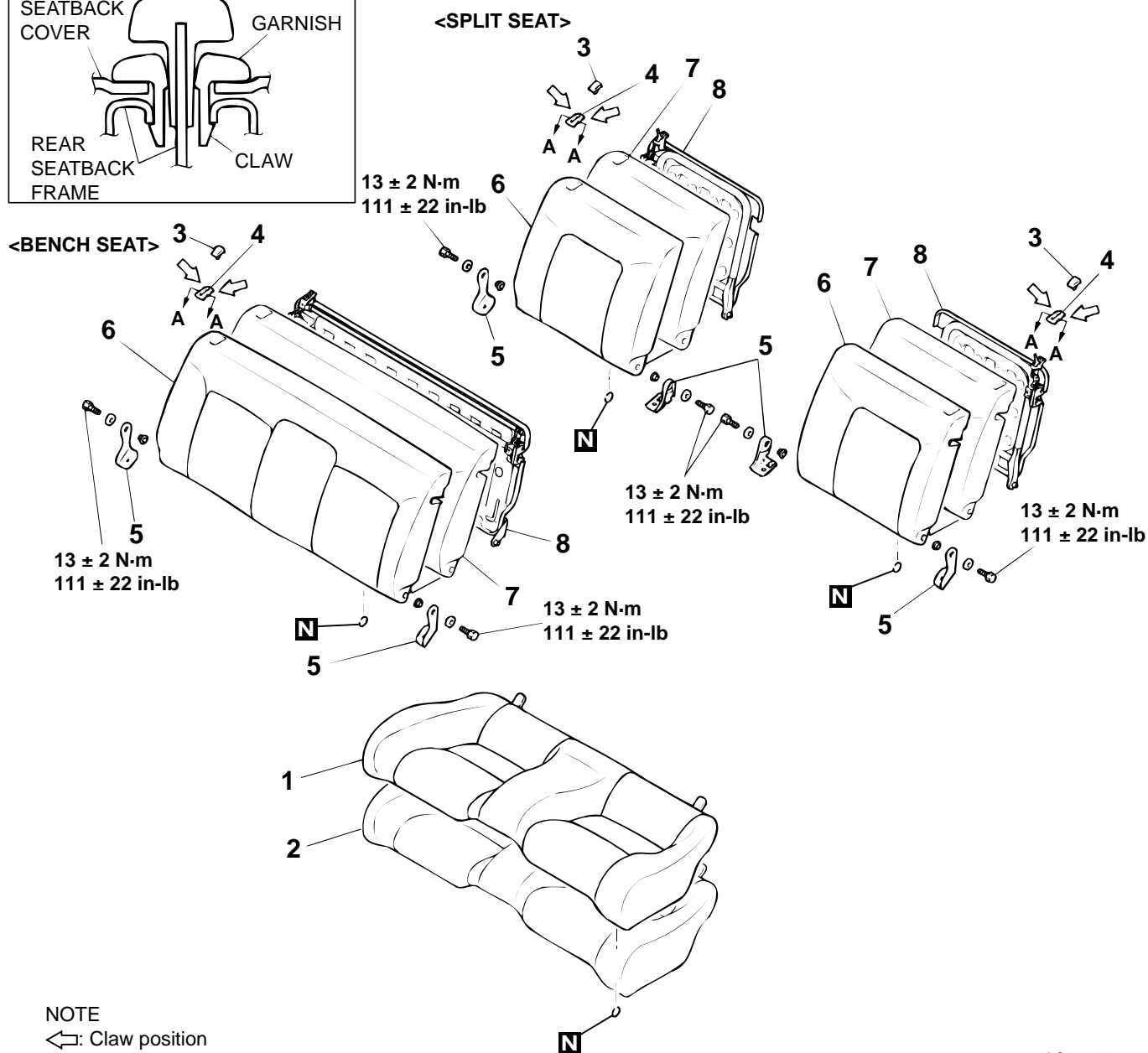


M1522002000090

SECTION A - A

Diagram illustrating the rear seatback assembly components:

- REAR SEATBACK COVER
- KNOB
- GARNISH
- REAR SEATBACK FRAME
- CLAW

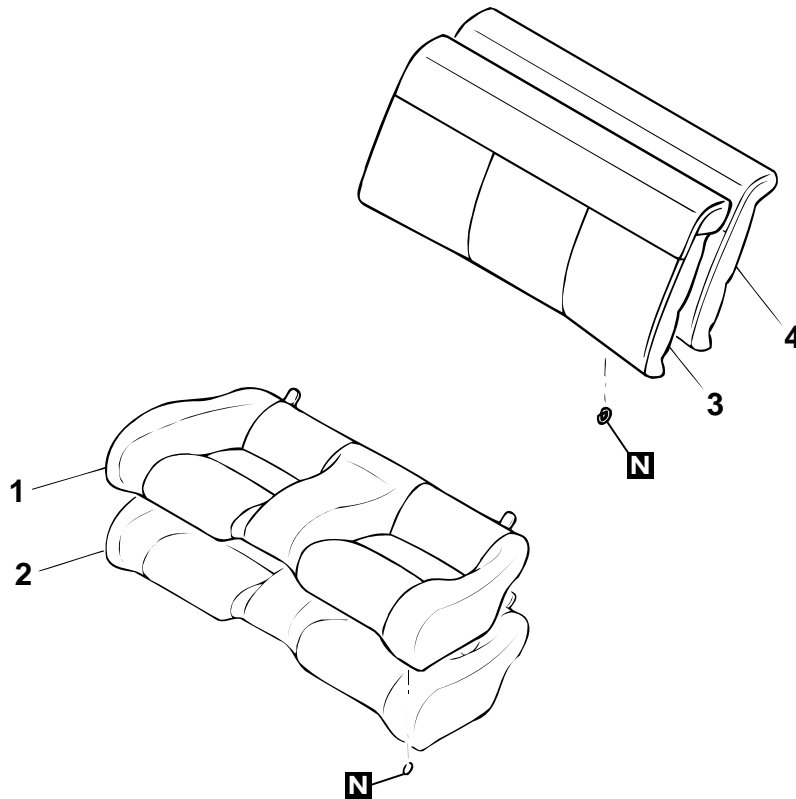


AC003041AB

DISASSEMBLY STEPS

5. REAR SEATBACK HINGE
6. REAR SEATBACK COVER
7. REAR SEATBACK PAD
8. REAR SEATBACK FRAME

<ECLIPSE SPYDER>



AC003052AB

DISASSEMBLY STEPS

1. REAR SEAT CUSHION COVER
2. REAR SEAT CUSHION PAD

DISASSEMBLY STEPS

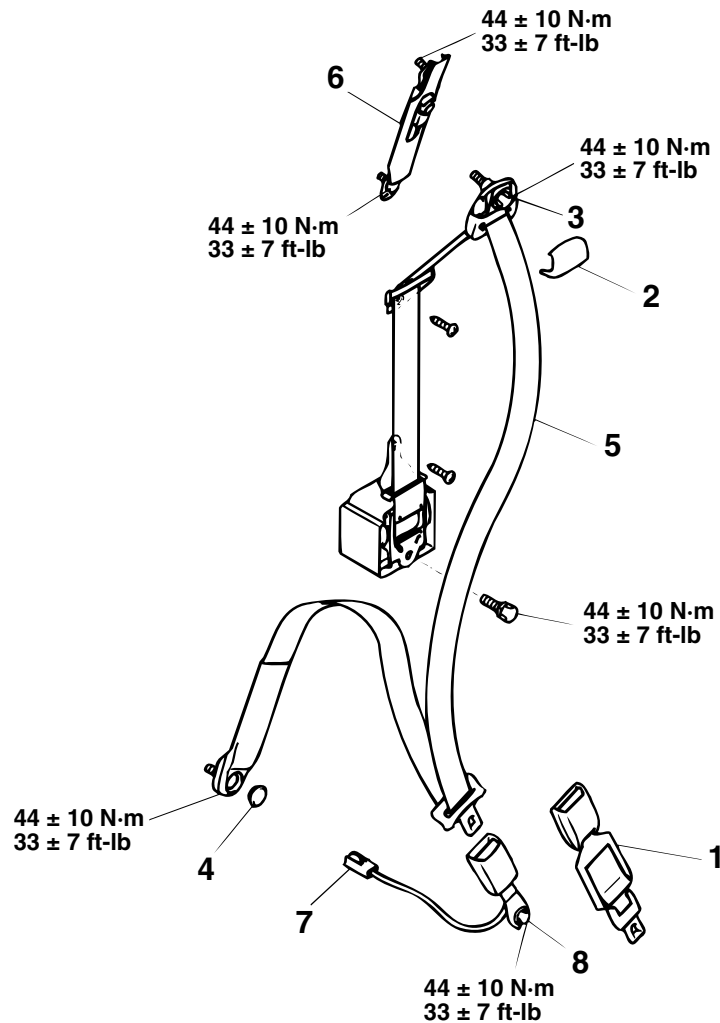
3. REAR SEATBACK COVER
4. REAR SEATBACK PAD

FRONT SEAT BELT

REMOVAL AND INSTALLATION

M1523001300068

<ECLIPSE>



AC000343AB

1. EXTENDER SEAT BELT ASSEMBLY*

OUTER SEAT BELT REMOVAL STEPS

2. SEAT BELT SASH GUIDE COVER
3. SEAT BELT ANCHOR PLATE
4. ANCHOR PLATE COVER CAP
 - QUARTER TRIM, LOWER (REFER TO [P.52A-9.](#))
5. OUTER SEAT BELT
 - QUARTER TRIM, UPPER (REFER TO [P.52A-9.](#))

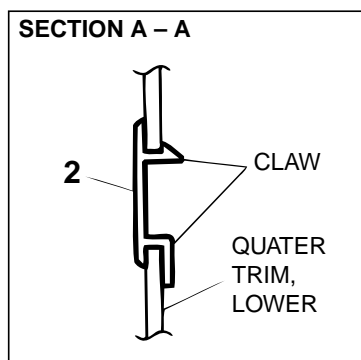
>>A<< 6. ADJUSTABLE SEAT BELT ANCHOR

INNER SEAT BELT REMOVAL STEPS

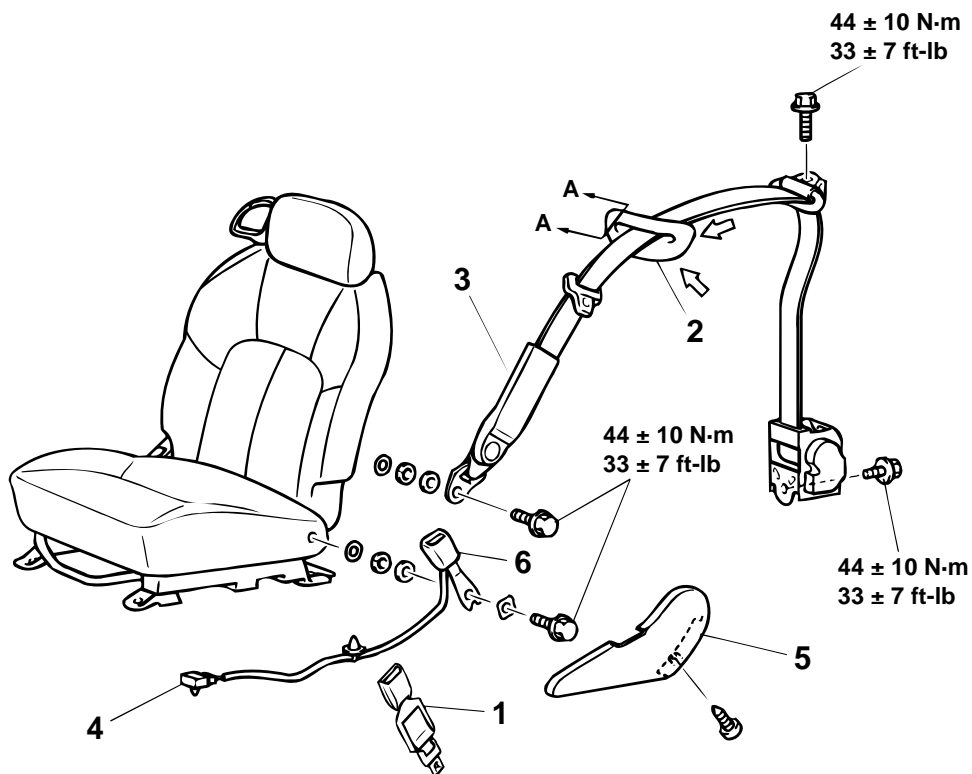
- FRONT SEAT ASSEMBLY (REFER TO [P.52A-15.](#))
- 7. HARNESS CONNECTOR (DRIVER'S SIDE)
- FRONT SEAT SHIELD COVER (REFER TO [P.52A-16.](#))
- 8. INNER SEAT BELT

NOTE: *Equipped if necessary (for particular vehicle usage)

<ECLIPSE SPYDER>



NOTE
: Claw position



AC003053AB

1. EXTENDER SEAT BELT ASSEMBLY*
2. SEAT BELT GUIDE
 - QUARTER TRIM, LOWER (REFER TO [P.52A-9.](#))
3. OUTER SEAT BELT

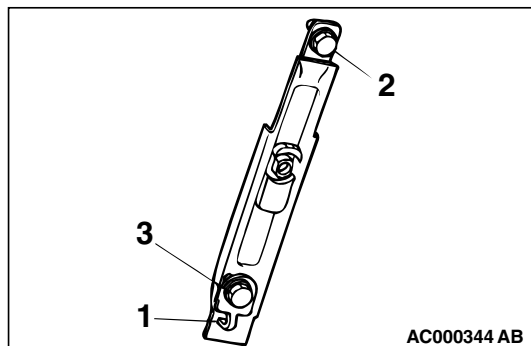
INNER SEAT BELT REMOVAL STEPS

- FRONT SEAT ASSEMBLY (REFER TO [P.52A-15.](#))
- 4. HARNESS CONNECTOR (DRIVER'S SIDE)
- 5. FRONT SEAT SHIELD COVER (REFER TO [P.52A-16.](#))
- 6. INNER SEAT BELT

NOTE: *Equipped if necessary (for particular vehicle usage)

INSTALLATION SERVICE POINT

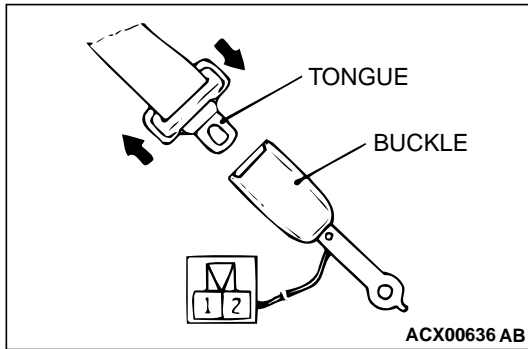
>>A< ADJUSTABLE SEAT BELT ANCHOR INSTALLATION
 Observe the order shown.



INSPECTION

M1523001400173

SEAT BELT BUCKLE SWITCH CONTINUITY CHECK



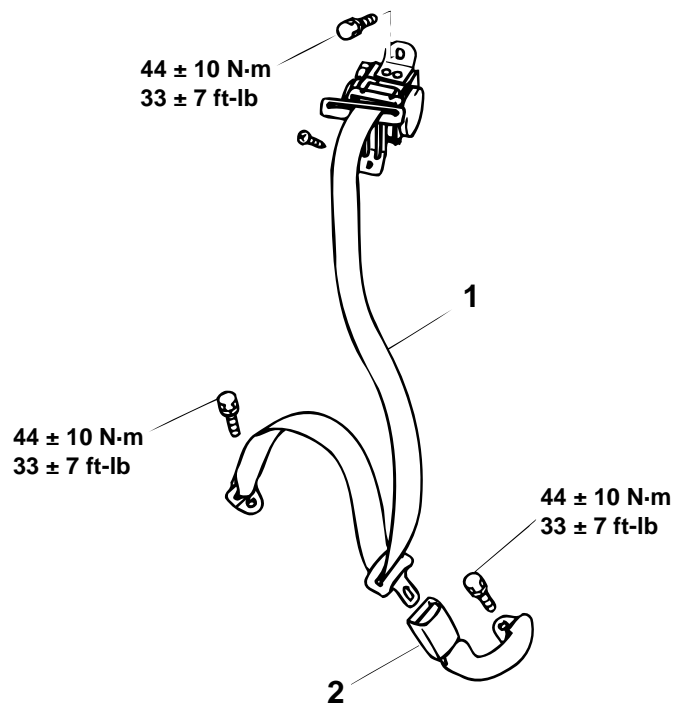
ITEMS	TESTER CONNECTION	SPECIFIED CONDITION
Fastened seat belt	1 – 2	Open circuit
Unfastened seat belt	1 – 2	Less than 2 ohm

REAR SEAT BELT

REMOVAL AND INSTALLATION

M1523001600069

<ECLIPSE>



AC003042AB

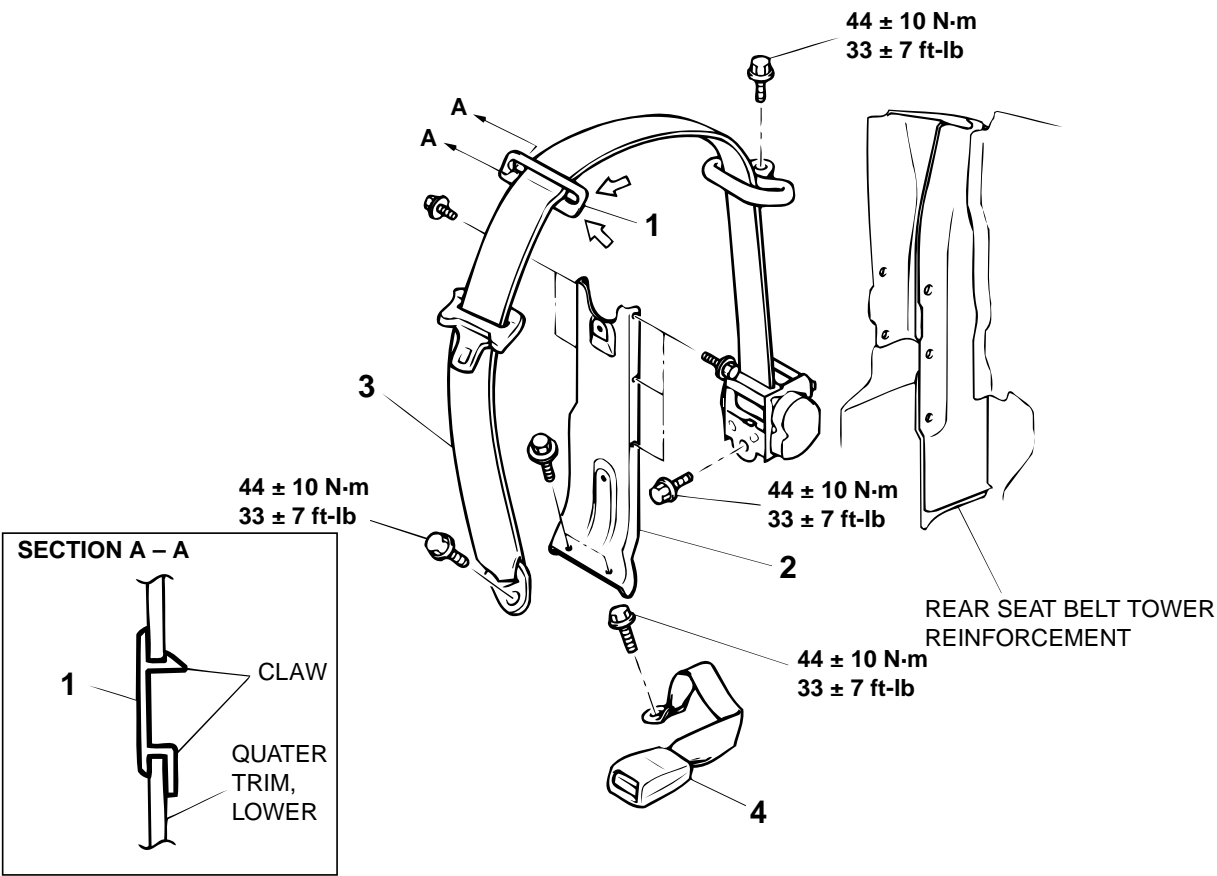
OUTER SEAT BELT REMOVAL STEPS

- REAR SEAT CUSHION (REFER TO [P.52A-20.](#))
- REAR SEATBACK (REFER TO [P.52A-20.](#))
- QUARTER TRIM, LOWER (REFER TO [P.52A-9.](#))
- 1. OUTER SEAT BELT

INNER SEAT BELT REMOVAL STEPS

- REAR SEAT CUSHION (REFER TO [P.52A-20.](#))
- 2. INNER SEAT BELT

<ECLIPSE SPYDER>



NOTE
⇐: Claw position

AC003054AB

**OUTER SEAT BELT REMOVAL
STEPS**

- REAR SEAT CUSHION (REFER TO [P.52A-20.](#))
- REAR SEATBACK (REFER TO [P.52A-20.](#))
- 1. SEAT BELT GUIDE
- QUARTER TRIM, LOWER (REFER TO [P.52A-9.](#))

**OUTER SEAT BELT REMOVAL
STEPS (Continued)**

- 2. OUTER SEAT BELT
 - 3. REAR SEAT BELT TOWER, FRONT
- INNER SEAT BELT REMOVAL
STEPS**
- REAR SEAT CUSHION (REFER TO [P.52A-20.](#))
 - 4. INNER SEAT BELT

SPECIFICATIONS

FASTENER TIGHTENING SPECIFICATIONS

M1521004100067

ITEM	SPECIFICATION
Adjustable seat belt anchor bolt	44 ± 10 N·m (33 ± 7 ft-lb)
Catch bolt	12 ± 2 N·m (100 ± 22 in-lb)
Front inner seat belt bolt	44 ± 10 N·m (33 ± 7 ft-lb)
Front outer seat belt anchor plate bolt	44 ± 10 N·m (33 ± 7 ft-lb)
Front outer seat belt bolt	44 ± 10 N·m (33 ± 7 ft-lb)

ITEM	SPECIFICATION
Front seat bolt	44 ± 10 N·m (33 ± 7 ft-lb)
Front seat nut	30 ± 5 N·m (22 ± 4 ft-lb)
Front seat reclining adjuster bolt	44 ± 10 N·m (33 ± 7 ft-lb)
Rear inner seat belt bolt	44 ± 10 N·m (33 ± 7 ft-lb)
Rear outer seat belt anchor plate bolt	44 ± 10 N·m (33 ± 7 ft-lb)
Rear outer seat belt bolt	44 ± 10 N·m (33 ± 7 ft-lb)
Rear seatback bolt	21 ± 4 N·m (16 ± 4 ft-lb)
Rear seatback hinge bolt	13 ± 2 N·m (111 ± 22 in-lb)
Striker bolt	4.9 ± 1.0 N·m (44 ± 8 in-lb)
Tether anchor bolt	22 ± 4 N·m (16 ± 3 ft-lb)

NOTES