

---

**GROUP 52****INTERIOR AND  
SUPPLEMENTAL  
SYSTEM (SRS)****CONTENTS**

|  |            |
|--|------------|
| <b>INTERIOR .....</b>                            | <b>52A</b> |
| <b>SUPPLEMENTAL RESTRAINT SYSTEM (SRS) .....</b> | <b>52B</b> |

## GROUP 52A

## INTERIOR

## CONTENTS

|   |               |   |               |
|---|---------------|---|---------------|
| <b>SEAT BELT DIAGNOSIS</b> . . . . .            | <b>52A-3</b>  | <b>FRONT SEAT ASSEMBLY</b> . . . . .            | <b>52A-17</b> |
| SEAT BELT WARNING SYSTEM<br>DIAGNOSIS . . . . . | 52A-3         | REMOVAL AND INSTALLATION . . . . .              | 52A-17        |
| <b>SPECIAL TOOLS</b> . . . . .                  | <b>52A-3</b>  | DISASSEMBLY AND ASSEMBLY . . . . .              | 52A-18        |
| <b>INSTRUMENT PANEL ASSEMBLY</b> . . . . .      | <b>52A-4</b>  | INSPECTION . . . . .                            | 52A-22        |
| REMOVAL AND INSTALLATION . . . . .              | 52A-4         | <b>REAR SEAT ASSEMBLY</b> . . . . .             | <b>52A-23</b> |
| DISASSEMBLY AND ASSEMBLY . . . . .              | 52A-8         | REMOVAL AND INSTALLATION . . . . .              | 52A-23        |
| <b>FLOOR CONSOLE ASSEMBLY</b> . . . . .         | <b>52A-9</b>  | DISASSEMBLY AND ASSEMBLY . . . . .              | 52A-26        |
| REMOVAL AND INSTALLATION . . . . .              | 52A-9         | <b>FRONT SEAT BELT</b> . . . . .                | <b>52A-28</b> |
| <b>TRIMS</b> . . . . .                          | <b>52A-10</b> | REMOVAL AND INSTALLATION . . . . .              | 52A-28        |
| REMOVAL AND INSTALLATION<br><ECLIPSE> . . . . . | 52A-10        | INSPECTION . . . . .                            | 52A-30        |
| <b>HEADLINING</b> . . . . .                     | <b>52A-14</b> | <b>REAR SEAT BELT</b> . . . . .                 | <b>52A-30</b> |
| REMOVAL AND INSTALLATION . . . . .              | 52A-14        | REMOVAL AND INSTALLATION . . . . .              | 52A-30        |
| <b>INSIDE REAR VIEW MIRROR</b> . . . . .        | <b>52A-15</b> | <b>SPECIFICATIONS</b> . . . . .                 | <b>52A-32</b> |
| REMOVAL AND INSTALLATION . . . . .              | 52A-15        | FASTENER TIGHTENING<br>SPECIFICATIONS . . . . . | 52A-32        |

## WARNINGS REGARDING SERVICING OF SUPPLEMENTAL RESTRAINT SYSTEM (SRS) EQUIPPED VEHICLES

**WARNING**

- *Improper service or maintenance of any component of the SRS, or any SRS-related component, can lead to personal injury or death to service personnel (from inadvertent firing of the air bag) or to the driver and passenger (from rendering the SRS inoperative).*
- *Service or maintenance of any SRS component or SRS-related component must be performed only at an authorized MITSUBISHI dealer.*
- *MITSUBISHI dealer personnel must thoroughly review this manual, and especially its GROUP 52B - Supplemental Restraint System (SRS) before beginning any service or maintenance of any component of the SRS or any SRS-related component.*

## NOTE

The SRS includes the following components: SRS air bag control unit, SRS warning light, front impact sensors, air bag module, clock spring, and interconnecting wiring. Other SRS-related components (that may have to be removed/installed in connection with SRS service or maintenance) are indicated in the table of contents by an asterisk (\*).

## SEAT BELT DIAGNOSIS

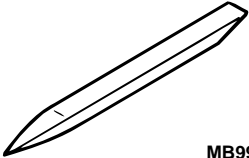
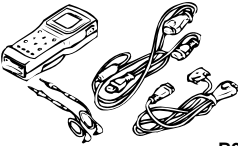
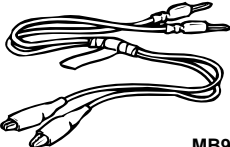

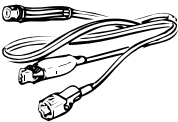
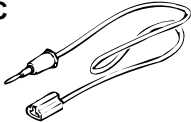

### SEAT BELT WARNING SYSTEM DIAGNOSIS

M1521000700067

The seat belt warning system is controlled by the Simplified Wiring System (SWS). For troubleshooting, refer to GROUP 54B [P.54B-115](#).

### SPECIAL TOOLS

M1521000600060

| TOOL  | TOOL NUMBER AND NAME   | SUPERSESSSION  | APPLICATION   |
|---|--|--|---|
|  <p>MB990784</p>   | <p>MB990784<br/>Ornament remover</p>   | <p>General service tool</p>                                  | <p>Removal of switch, trim, etc.</p>                                  |
|  <p>B991502</p>   | <p>MB991502<br/>Scan tool (MUT-II)</p>   | <p>MB991496-OD</p>   | <p>Checking the ETACS-ECU input signal</p>                            |
|  <p>MB991529</p>   | <p>MB991529<br/>Diagnostic trouble code check harness</p>  | <p>Tool not necessary if scan tool (MUT-II) is available</p> | <p>Checking the ETACS-ECU input signal (When using the voltmeter)</p> |
| <p>A</p>  <p>B</p>  <p>C</p>  <p>D</p>  <p>MB991223AE</p> | <p>MB991223<br/>A: MB991219<br/>B: MB991220<br/>C: MB991221<br/>D: MB991222<br/>Harness set<br/>A: Test harness<br/>B: LED harness<br/>C: LED harness<br/>D: Probe</p> | <p>MB991223</p>  | <p>Measurement of terminal voltage</p>                                |

## INSTRUMENT PANEL ASSEMBLY


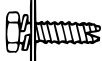

## REMOVAL AND INSTALLATION

M1521001700060

**⚠ WARNING**

**For removal and installation of the passenger's side air bag module, always observe the service procedures described in GROUP 52B, Air Bag Module and Clock Spring P.52B-69.**

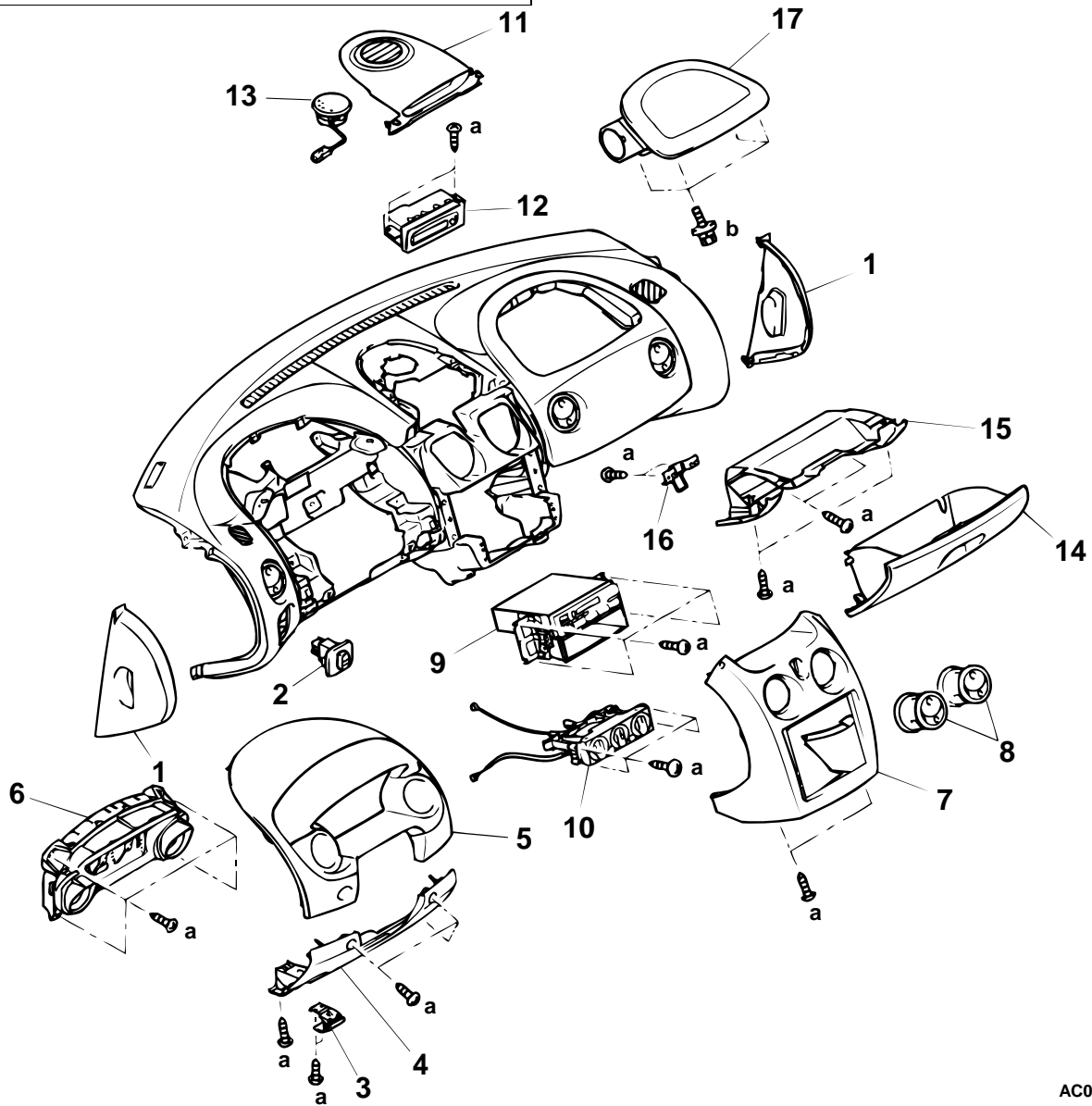
The bolts and screws described below are used for installation of the instrument panel. They are indicated by symbols in the illustration.

| NAME                           | SYMBOL | SIZE (D × L) mm (in) | COLOR | SHAPE   |
|--------------------------------|--------|----------------------|-------|---|
| Tapping screw                  | a      | 5 × 16 (0.20 × 0.63) | -     | <br>ACX01282 |
| Washer assembled bolt          | b      | 6 × 16 (0.24 × 0.63) | -     | <br>ACX02229 |
|                                | c      | 6 × 20 (0.24 × 0.79) |       |   |
|                                | d      | 6 × 16 (0.24 × 0.63) |       |   |
| Washer assembled bolt (ground) | e      | 6 × 16 (0.24 × 0.63) | -     | <br>ACX00614 |
|                                | f      | 6 × 20 (0.24 × 0.79) |       |   |

D: Thread diameter L: Effective thread length

**Pre-removal and Post-installation Operation**

- Floor Console Assembly Removal and Installation (Refer to P.52A-9.)
- Steering Wheel and Shaft Removal and Installation (Refer to GROUP 37A, Steering Wheel and Shaft P.37A-20.)
- Front Pillar Trim Removal Installation (Refer to P.52A-10.)



AC003330AB

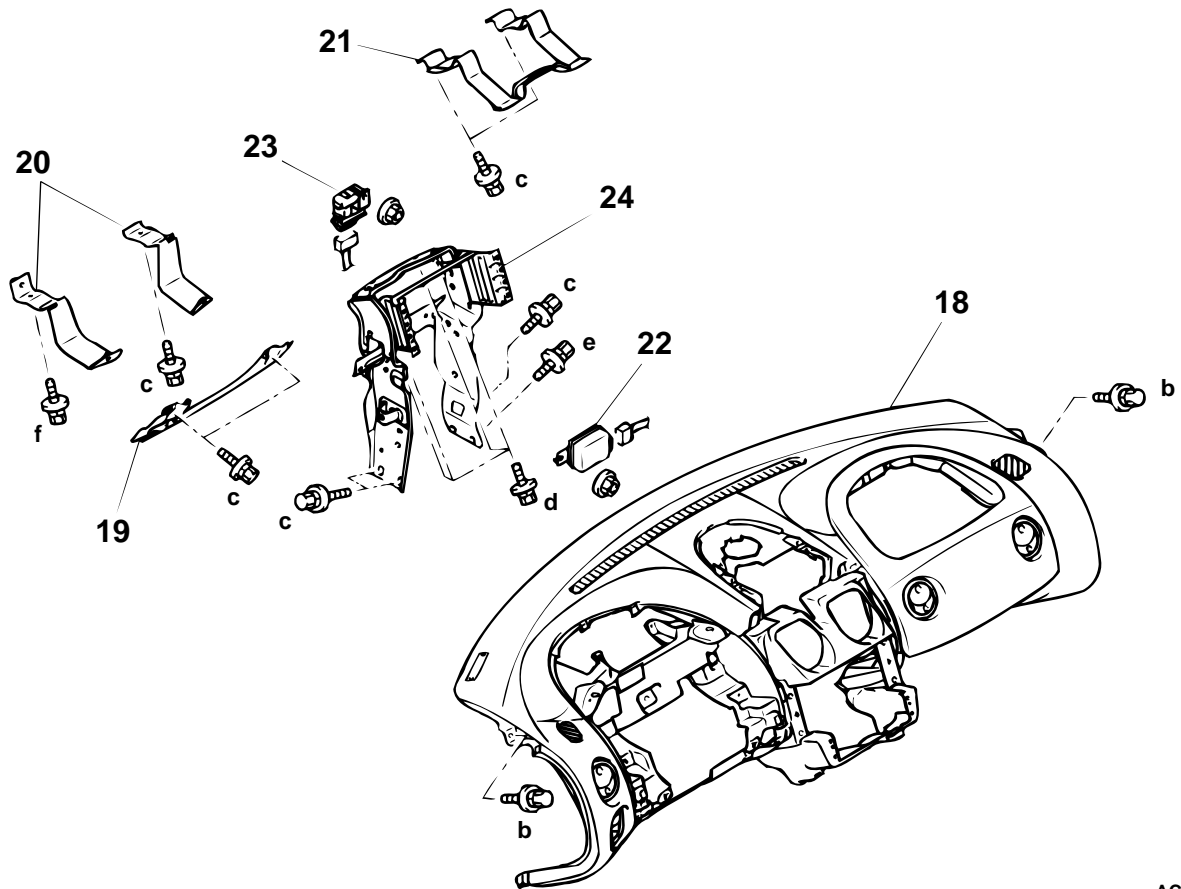
**REMOVAL STEPS**

1. INSTRUMENT PANEL SIDE COVER
2. FOG LAMP SWITCH ASSEMBLY
3. HOOD LOCK RELEASE HANDLE
4. INSTRUMENT PANEL UNDER COVER
5. METER BEZEL ASSEMBLY
6. COMBINATION METER
7. CENTER PANEL ASSEMBLY
8. AIR OUTLET (CENTER SIDE)
9. RADIO AND TAPE PLAYER ASSEMBLY

**REMOVAL STEPS (Continued)**

10. HEATER CONTROL ASSEMBLY (REFER TO GROUP 55, HEATER CONTROL ASSEMBLY AND A/C SWITCH P.55-26.)
11. CENTER HOOD
12. MULTI CENTER DISPLAY
13. CENTER SPEAKER
14. GLOVE BOX, OUTER
15. GLOVE BOX, INNER
16. GLOVE BOX STRIKER
17. AIR BAG MODULE (PASSENGER'S SIDE) (REFER TO GROUP 52B, AIR BAG MODULES AND CLOCK SPRING P.52B-69.)

TSB Revision



AC003331AB

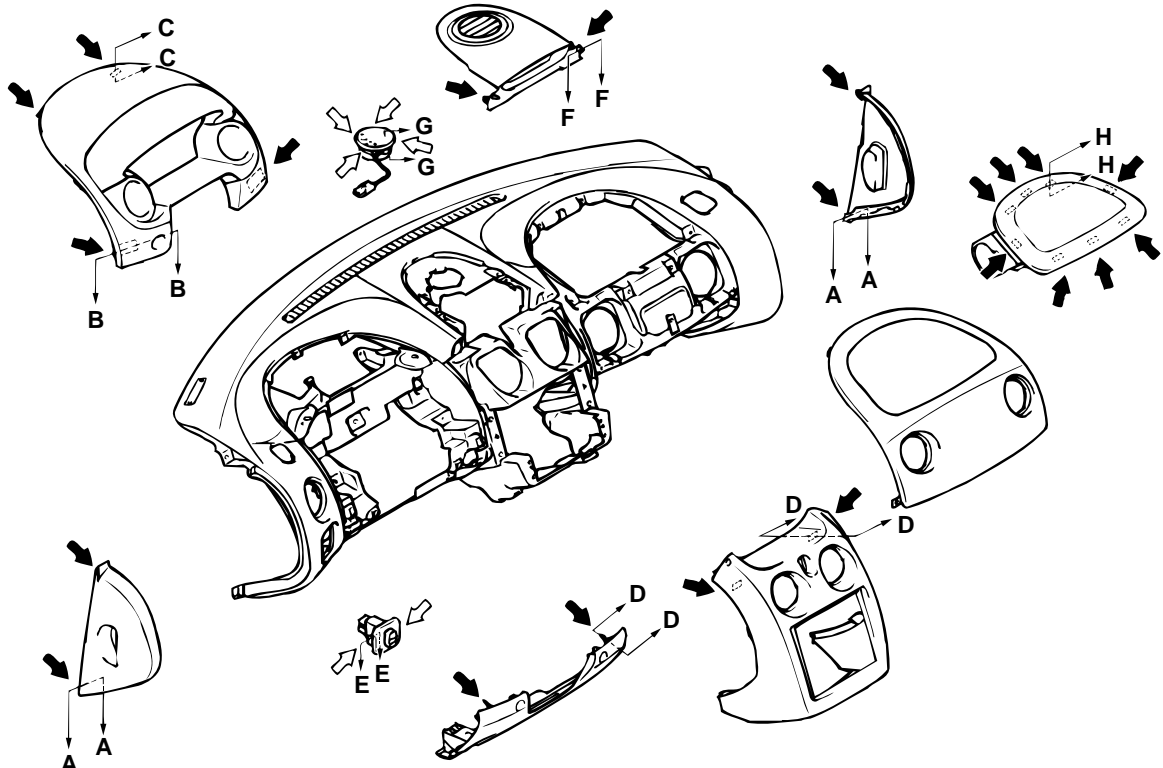
**REMOVAL STEPS**

- 18. INSTRUMENT PANEL ASSEMBLY
- 19. INSTRUMENT PANEL REINFORCEMENT
- 20. KNEE ABSORBER (DRIVER'S SIDE)
- 21. KNEE ABSORBER (PASSENGER'S SIDE)

**REMOVAL STEPS (Continued)**

- 22. AUTO-CRUISE CONTROL-ECU
- 23. IMMOBILIZER-ECU
- 24. INSTRUMENT PANEL CENTER REINFORCEMENT

CLIP AND CLAW POSITIONS



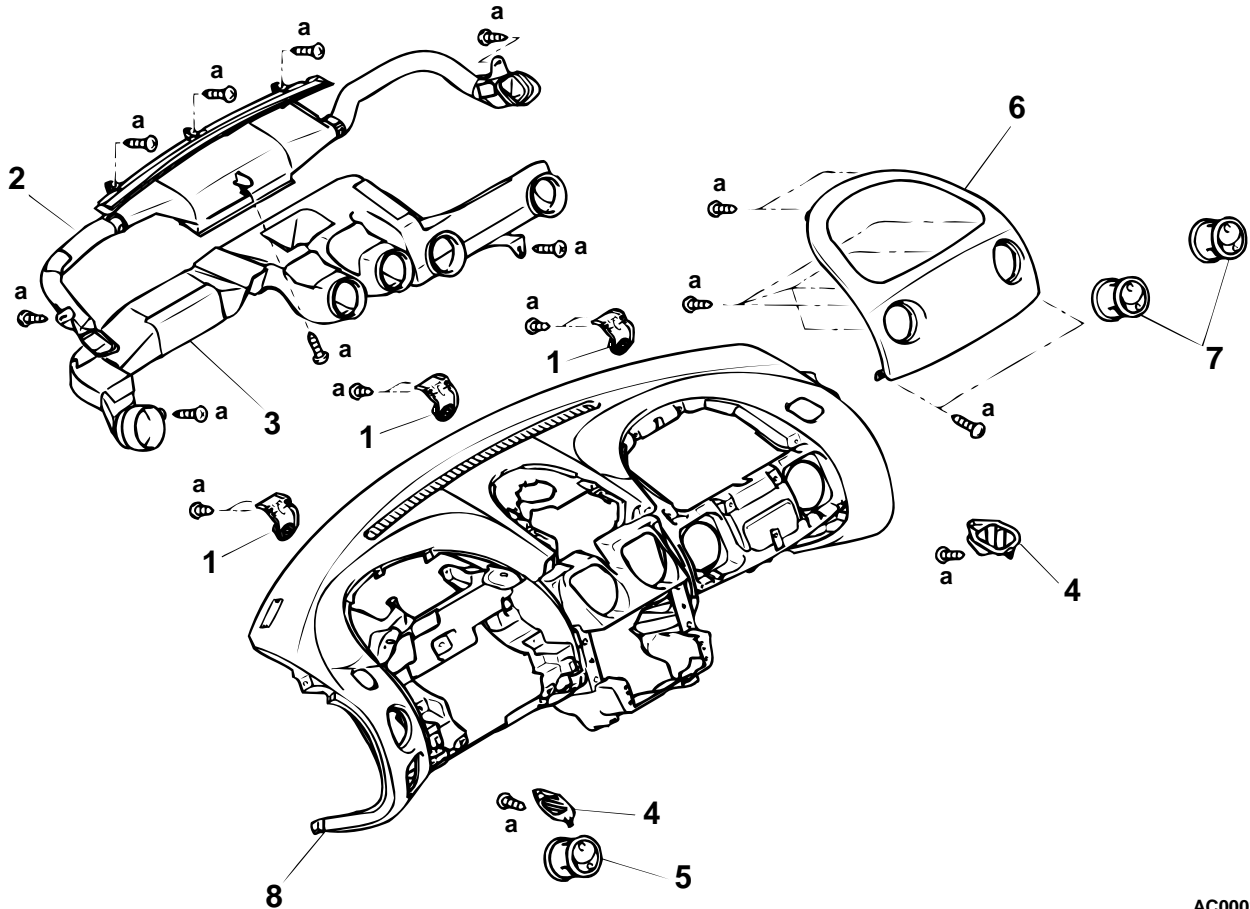
NOTE  
 ←: Clip position  
 ⇐: Claw position

|   |   |  |   |
|---|---|--|---|
| <p><b>SECTION A - A</b></p> <p>CLIP INSTRUMENT PANEL</p> <p>INSTRUMENT PANEL SIDE COVER</p> | <p><b>SECTION B - B</b></p> <p>CLIP INSTRUMENT PANEL</p> <p>METER BEZEL</p> | <p><b>SECTION C - C</b></p> <p>METER BEZEL</p> <p>CLIP INSTRUMENT PANEL</p>    | <p><b>SECTION D - D</b></p> <p>CLIP COVER</p> <p>INSTRUMENT PANEL</p> |
| <p><b>SECTION E - E</b></p> <p>INSTRUMENT PANEL CLAW</p> <p>FOGLIGHT SWITCH ASSEMBLY</p>    | <p><b>SECTION F - F</b></p> <p>CLIP INSTRUMENT PANEL</p> <p>CENTER HOOD</p> | <p><b>SECTION G - G</b></p> <p>CENTER SPEAKER</p> <p>CLAW INSTRUMENT PANEL</p> | <p><b>SECTION H - H</b></p> <p>AIR BAG MODULE</p> <p>PAD CLIP</p>     |

AC003332AB

TSB Revision

## DISASSEMBLY AND ASSEMBLY



AC000328AB

**DISASSEMBLY STEPS**

1. INSTRUMENT PANEL UPPER BRACKET
2. DEFROSTER NOZZLE ASSEMBLY
3. DISTRIBUTION DUCT
4. SIDE DEFROSTER GRILLE

**DISASSEMBLY STEPS (Continued)**

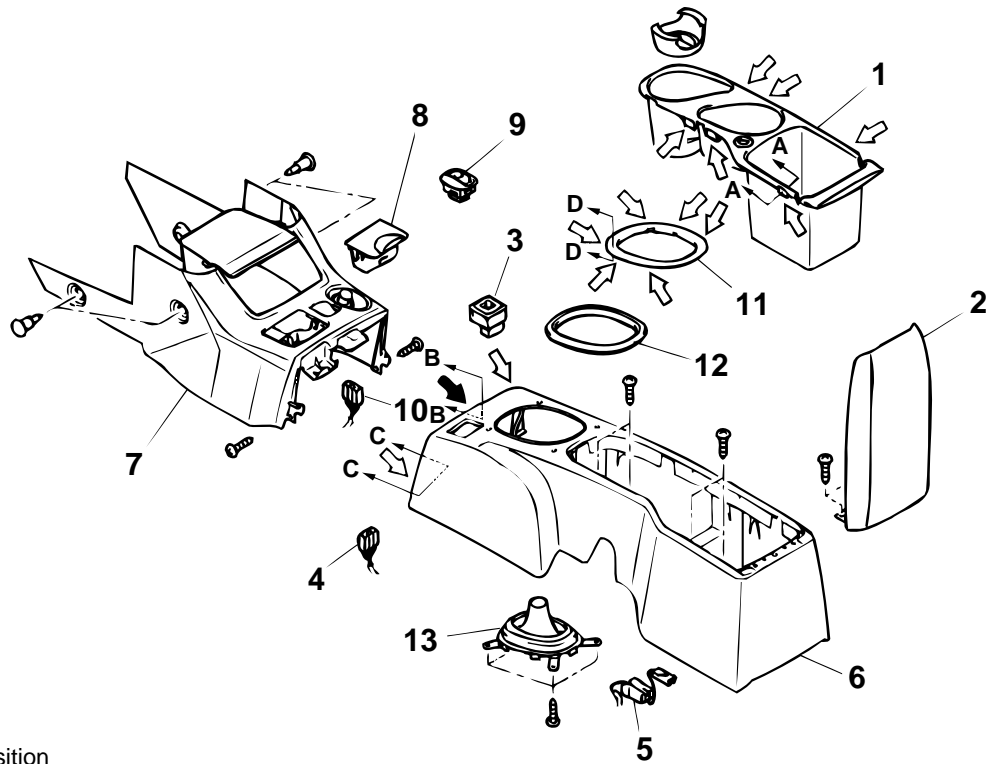
5. AIR OUTLET (DRIVER'S SIDE)
6. PAD (PASSENGER'S SIDE)
7. AIR OUTLET (PASSENGER'S SIDE)
8. INSTRUMENT PANEL



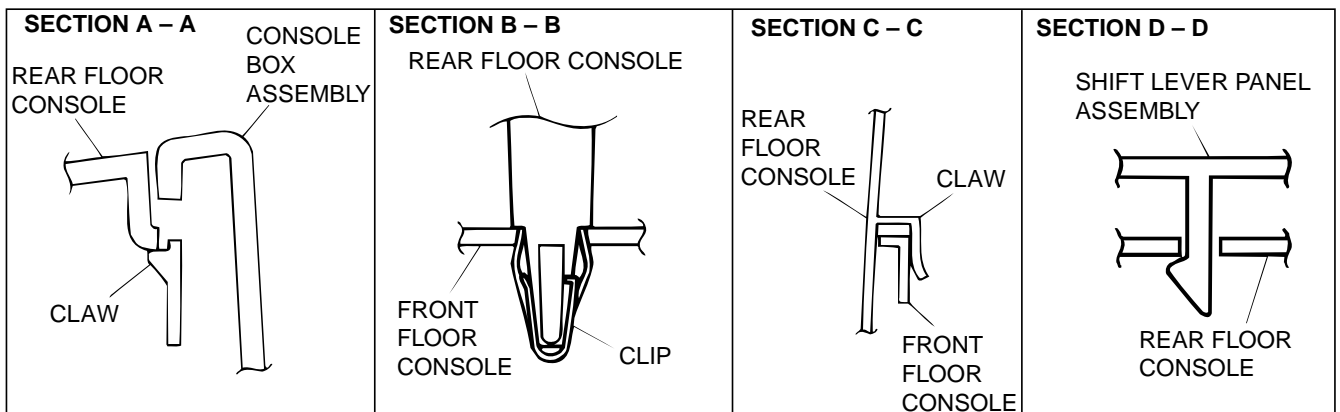
# FLOOR CONSOLE ASSEMBLY

## REMOVAL AND INSTALLATION

M1521002200068



NOTE  
 : Clip position  
 : Claw position



AC003043AB

### REMOVAL STEPS

1. CONSOLE BOX ASSEMBLY
2. CONSOLE LID ASSEMBLY <EXCEPT ECLIPSE "RS">
3. DOOR MIRROR CONTROL SWITCH
4. DOOR MIRROR CONTROL SWITCH HARNESS
5. ACCESSORY SOCKET HARNESS
6. REAR FLOOR CONSOLE
7. FRONT FLOOR CONSOLE

### REMOVAL STEPS (Continued)

8. ASHTRAY
9. FOLDING TOP SWITCH <ECLIPSE SPYDER>
10. FOLDING TOP SWITCH HARNESS <ECLIPSE SPYDER>
11. SHIFT LEVER PANEL ASSEMBLY <M/T>
12. GARNISH <A/T>
13. SHIFT LEVER BOOT <M/T>

TSB Revision

# TRIMS

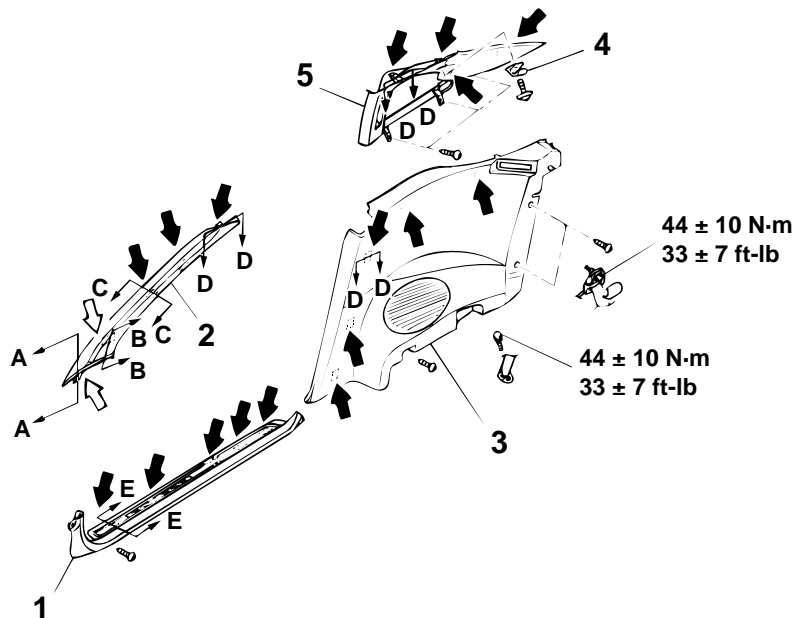
## REMOVAL AND INSTALLATION

### <ECLIPSE>

M1521001100068

**Pre-removal and Post-installation Operation**

- Rear Seat Cushion and Installation (Refer to P.52A-23.)



**NOTE**

- ←: Clip position
- ⇐: Claw position

|                             |                             |                             |                             |
|-----------------------------|-----------------------------|-----------------------------|-----------------------------|
| <p><b>SECTION A - A</b></p> | <p><b>SECTION B - B</b></p> | <p><b>SECTION C - C</b></p> | <p><b>SECTION D - D</b></p> |
| <p><b>SECTION E - E</b></p> |                             |                             |                             |

AC003034AB

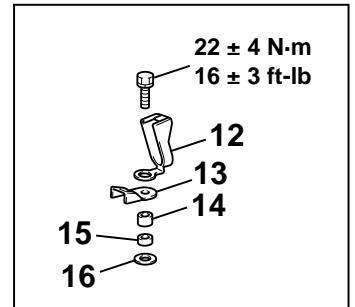
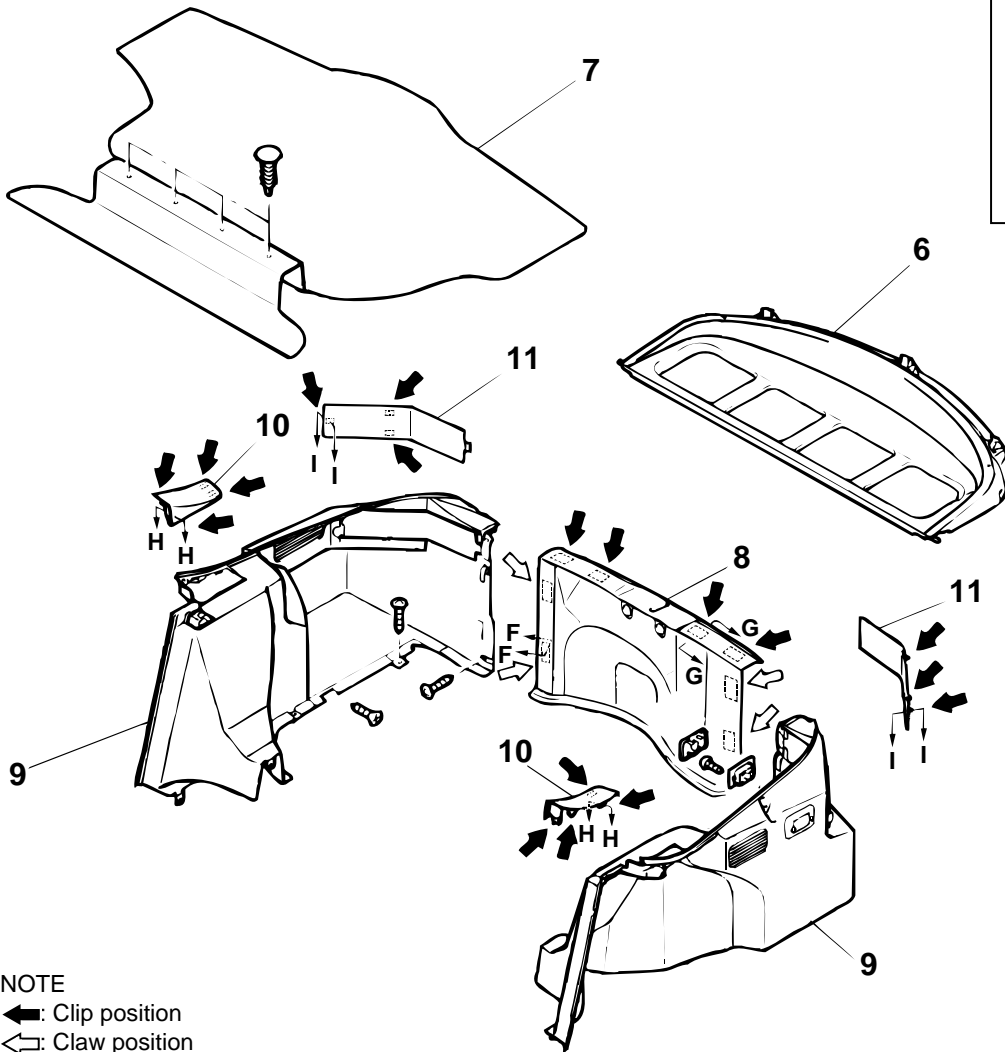
**TRIMS REMOVAL STEPS**

1. FRONT SCUFF PLATE
2. FRONT PILLAR TRIM
3. QUARTER TRIM, LOWER

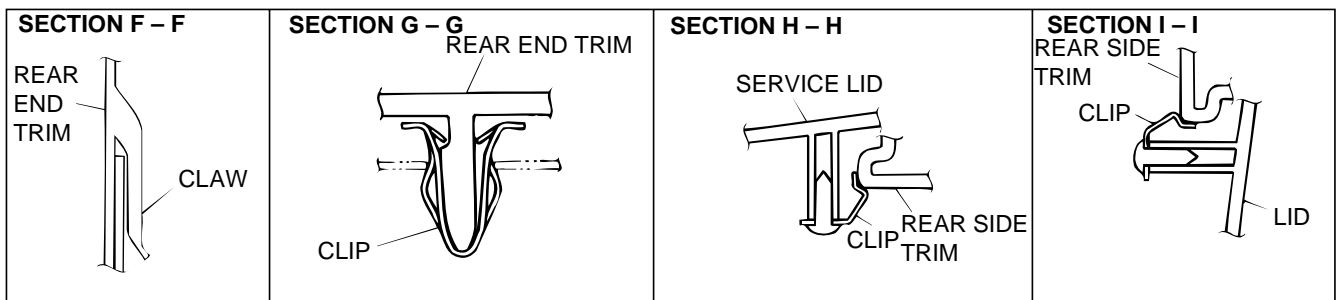
**TRIMS REMOVAL STEPS**

4. COAT HANGER (LH ONLY)
5. QUARTER TRIM, UPPER

TSB Revision



NOTE  
 ←: Clip position  
 ⇐: Claw position



AC003035AB

**TRIMS REMOVAL STEPS**

6. SHELF TRIM
7. LUGGAGE COMPARTMENT FLOOR CARPET ASSEMBLY
8. REAR END TRIM
9. REAR SIDE TRIM
10. SERVICE LID
11. LID

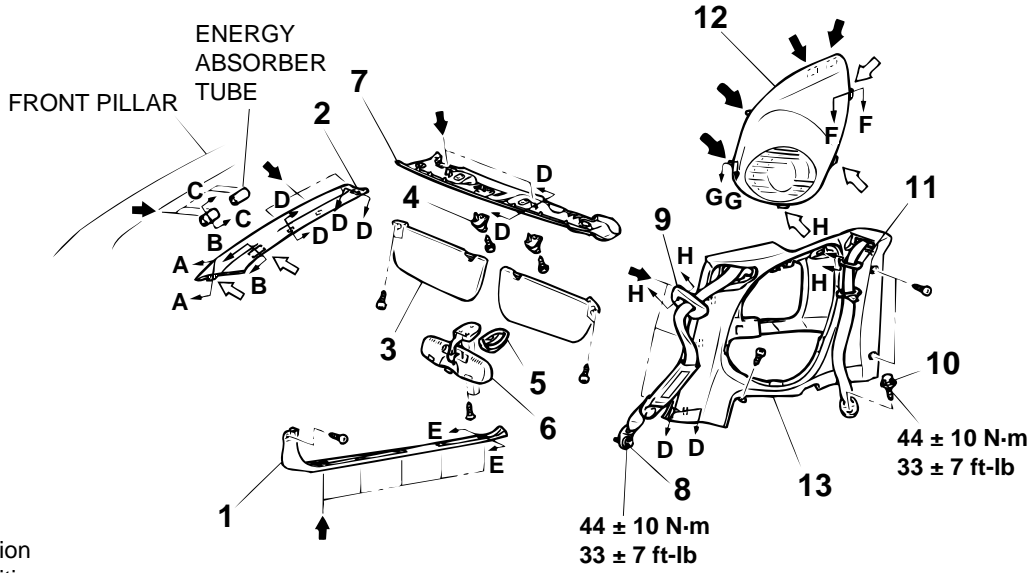
**TETHER ANCHOR REMOVAL STEPS**

12. COVER
13. TETHER ANCHOR BRACKET
14. SPACER 10mm (0.4 inch)
15. SPACER 7mm (0.3 inch)
16. FIBER WASHER

TSB Revision

<ECLIPSE SPYDER>

**Pre-removal and Post-installation Operation**  
 • Rear Seat Cushion and Installation (Refer to P.52A-23.)



NOTE  
 ◀: Clip position  
 ⇐: Claw position

|  |   |   |  |
|--|---|---|--|
| <p><b>SECTION A - A</b></p> <p>WINDSHIELD<br/>INSTRUMENT PANEL<br/>FRONT PILLAR TRIM</p> | <p><b>SECTION B - B</b></p> <p>FRONT PILLAR TRIM<br/>CLAW</p>                   | <p><b>SECTION C - C</b></p> <p>FRONT PILLAR TRIM<br/>FRONT PILLAR<br/>E/A TUBE</p>  | <p><b>SECTION D - D</b></p> <p>CLIP<br/>QUARTER TRIM<br/>LOWER FRONT PILLAR TRIM, FRONT ROOF RAIL TRIM</p> |
| <p><b>SECTION E - E</b></p> <p>FRONT SCUFF PLATE<br/>CLIP<br/>GROMMET</p>                | <p><b>SECTION F - F</b></p> <p>QUARTER TRIM, LOWER SPEAKER GARNISH<br/>CLAW</p> | <p><b>SECTION G - G</b></p> <p>QUARTER TRIM, LOWER<br/>SPEAKER GARNISH<br/>CLIP</p> | <p><b>SECTION H - H</b></p> <p>SEAT BELT GUIDE<br/>CLAW<br/>QUARTER TRIM, LOWER</p>                        |

AC003044AB

**FRONT PILLAR TRIM AND FRONT ROOF RAIL TRIM REMOVAL STEPS**

1. FRONT SCUFF PLATE
2. FRONT PILLAR TRIM
3. SUNVISOR
4. SUNVISOR HOLDER
5. INSIDE REAR VIEW MIRROR STAY COVER
6. INSIDE REAR VIEW MIRROR
7. FRONT ROOF RAIL TRIM

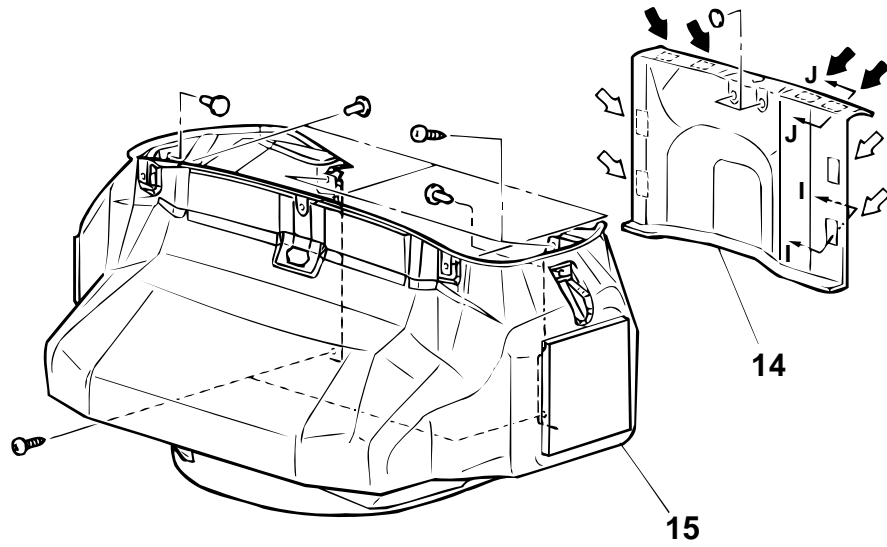
**QUARTER TRIM REMOVAL STEPS**

- DOOR INNER REAR OPENING WEATHERSTRIP (REFER TO GROUP 42 – DOOR INNER OPENING WEATHERSTRIP P.42-83.)
- REAR SEAT (REFER TO P.52A-23.)
- 8. FRONT OUTER SEAT BELT ANCHOR PLATE
- 9. SEAT BELT GUIDE <FRONT>
- 10. REAR OUTER SEAT BELT ANCHOR PLATE

TSB Revision

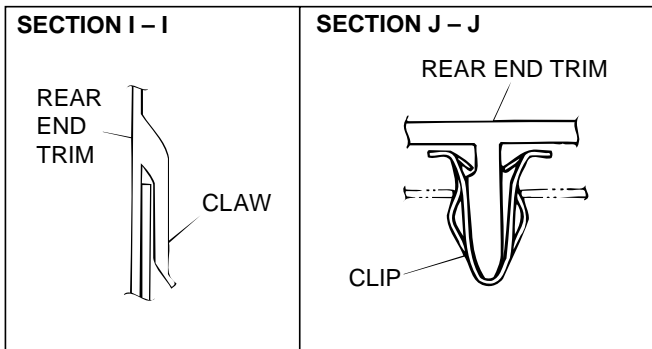
**QUARTER TRIM REMOVAL  
STEPS (Continued)**

11. SEAT BELT GUIDE <REAR>
12. REAR SPEAKER GARNISH
13. QUARTER TRIM, LOWER



**NOTE**

- ←: Clip position
- ⇐: Claw position



14. REAR END TRIM
15. TRUNK COMPARTMENT TRIM

AC003045AB

# HEADLINING

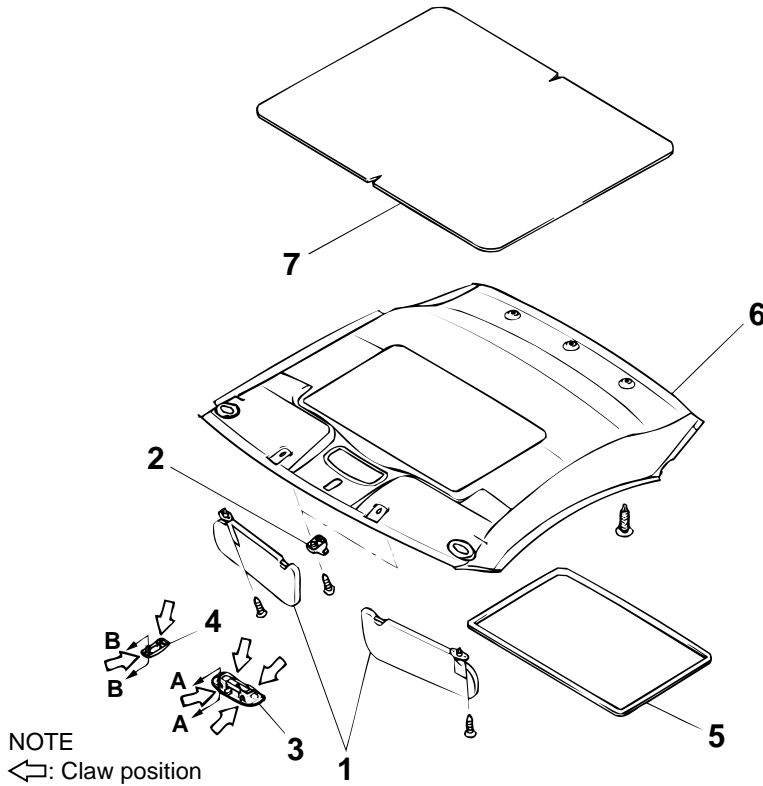
## REMOVAL AND INSTALLATION

M1521001400069

### <ECLIPSE>

**Pre-removal and Post-installation Operation**

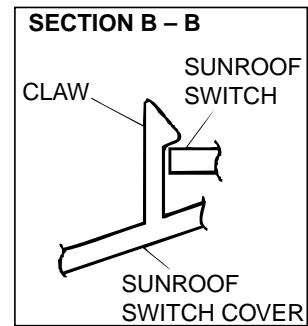
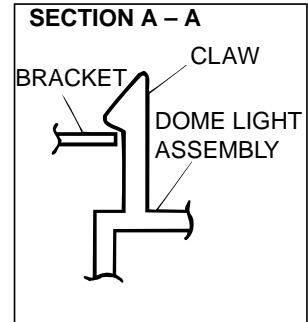
- Front Pillar Trim and Quarter Trim, Upper Removal and Installation (Refer to P.52A-10.)



NOTE  
←: Claw position

**REMOVAL STEPS**

1. SUNVISOR ASSEMBLY
2. SUNVISOR HOLDER
3. DOOM LIGHT ASSEMBLY  
<VEHICLES WITHOUT SUNROOF>
4. SUNROOF SWITCH COVER  
<VEHICLES WITH SUNROOF>



AC003036AB

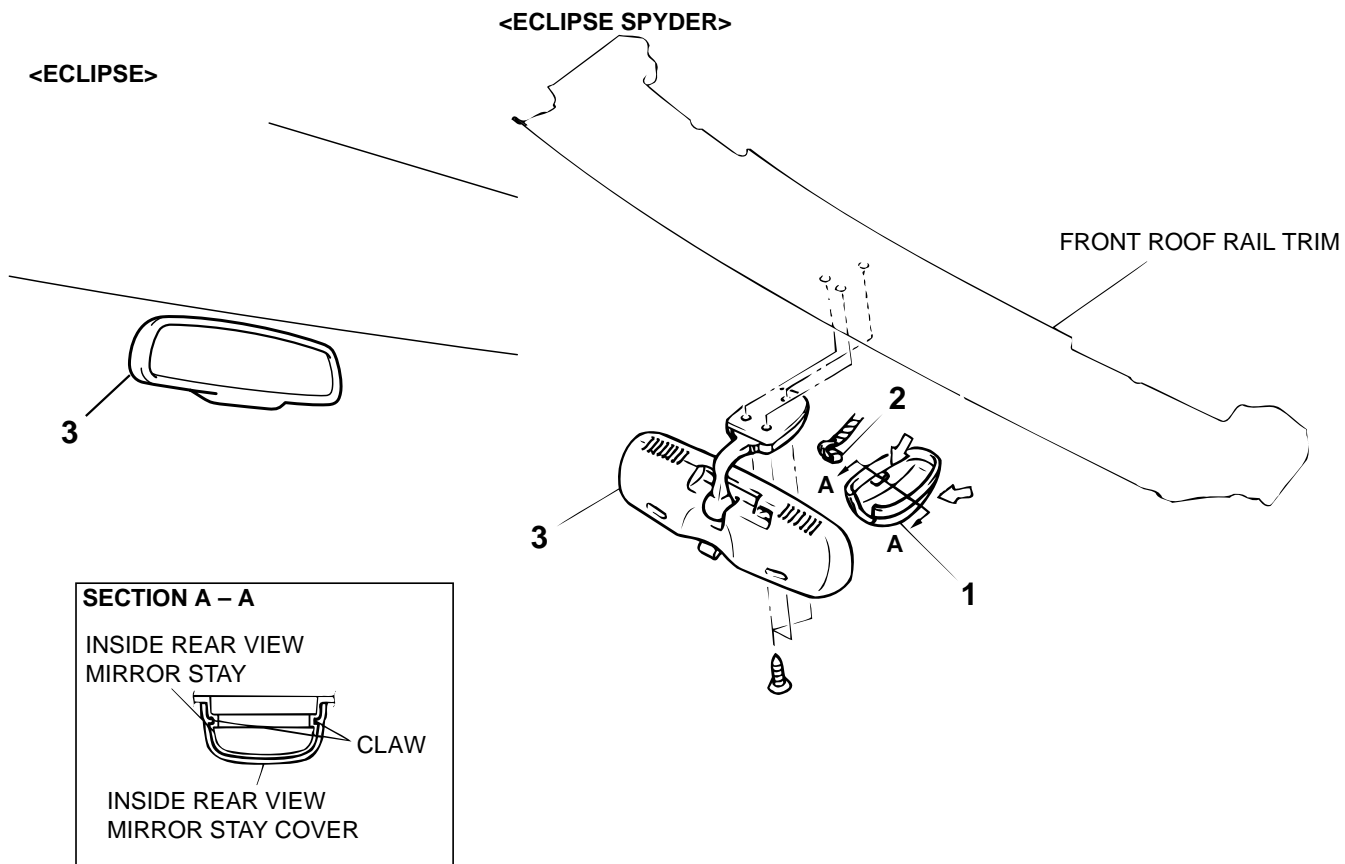
**REMOVAL STEPS (Continued)**

5. HEADLINING TRIM <VEHICLES WITH SUNROOF>
6. HEADLINING
7. ROOF PAD <VEHICLES WITHOUT SUNROOF>

# INSIDE REAR VIEW MIRROR

## REMOVAL AND INSTALLATION

M1521002700063



NOTE

←: Claw position

AC003275AB

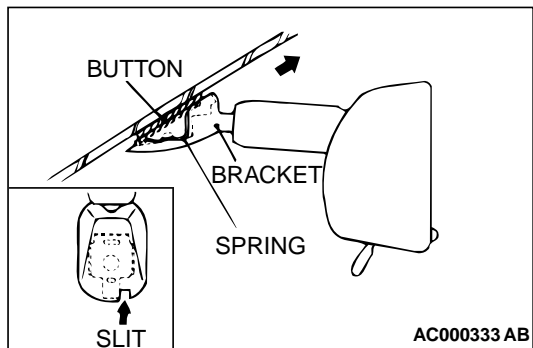
- REMOVAL <ECLIPSE>**
- COMPASS SENSOR
- <<A>> 3. INSIDE REAR VIEW MIRROR

- REMOVAL STEPS <ECLIPSE SPYDER>**
1. INSIDE REAR VIEW MIRROR STAY COVER
  2. HARNESS CONNECTOR
  3. INSIDE REAR VIEW MIRROR

**REMOVAL SERVICE POINT****<<A>> INSIDE REAR VIEW MIRROR REMOVAL**

Insert a narrow flat-tip screwdriver into the slit in the inside rear view mirror in the direction of the arrow in the illustration.

*NOTE: While the spring is pushed in, connection between the spring and the pawl of the button is released.*





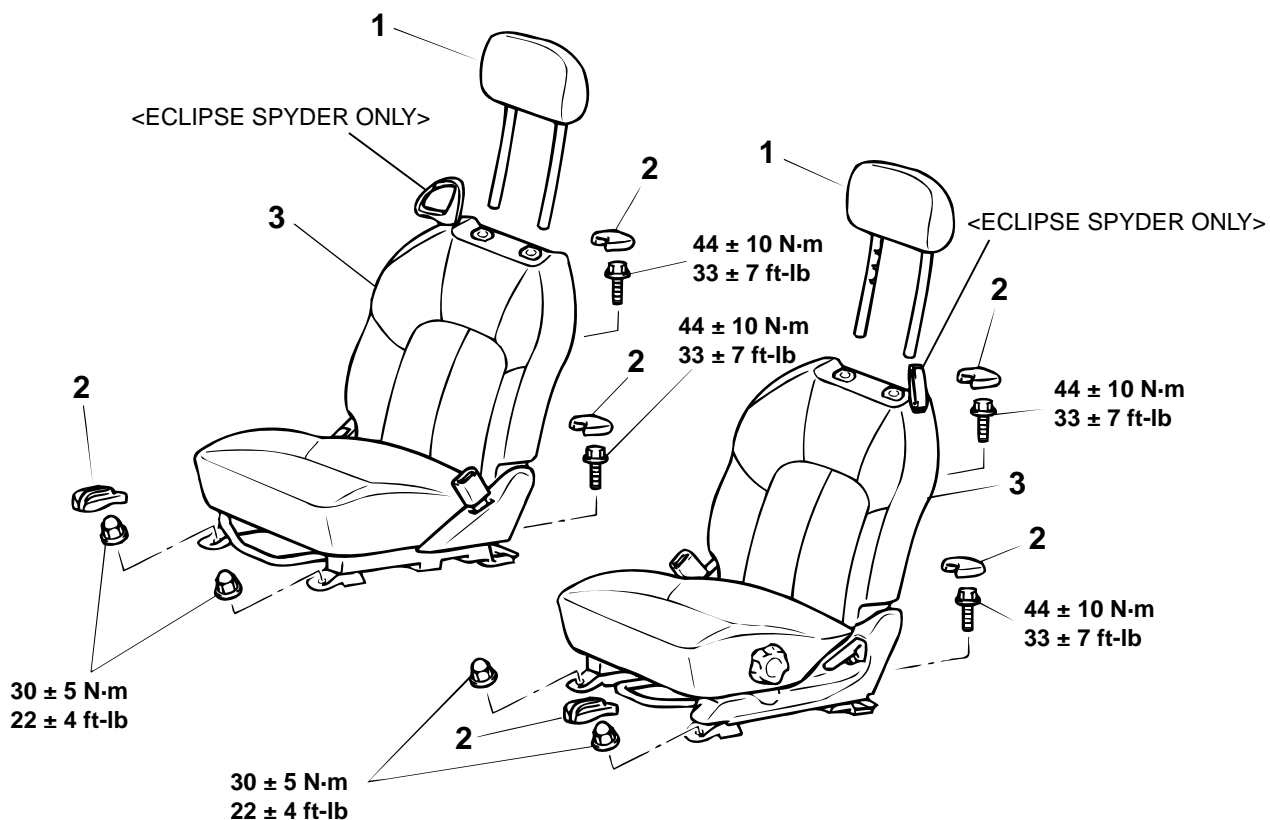
# FRONT SEAT ASSEMBLY

## REMOVAL AND INSTALLATION

M1522001300065

**⚠ WARNING**

Before removing a seat equipped with a side air bag module, refer to **GROUP 52B, SRS Service Precautions P.52B-15**.



AC003047AB

1. HEAD RESTRAINT

### FRONT SEAT ASSEMBLY REMOVAL STEPS

- HARNESS CONNECTOR
- 2. SEAT ANCHOR COVER
- >>A<< 3. FRONT SEAT ASSEMBLY

### INSTALLATION SERVICE POINT

#### >>A<< FRONT SEAT ASSEMBLY INSTALLATION

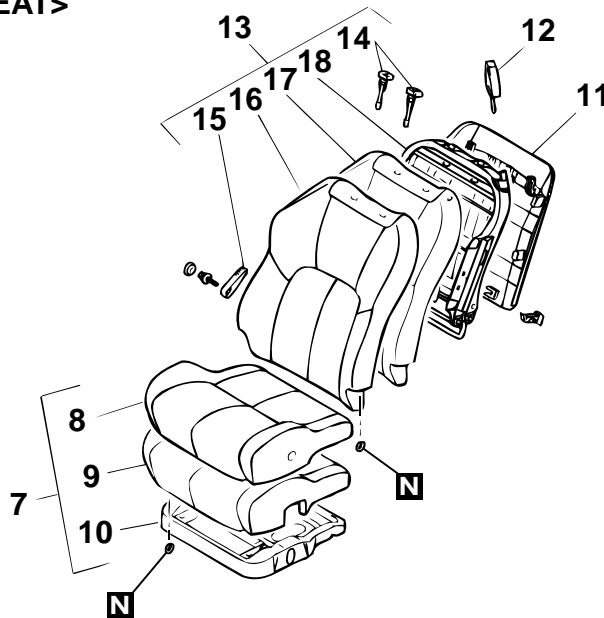
First install all of the front seat assembly mounting nuts and bolts, and then tighten them to the specified torque.

DISASSEMBLY AND ASSEMBLY

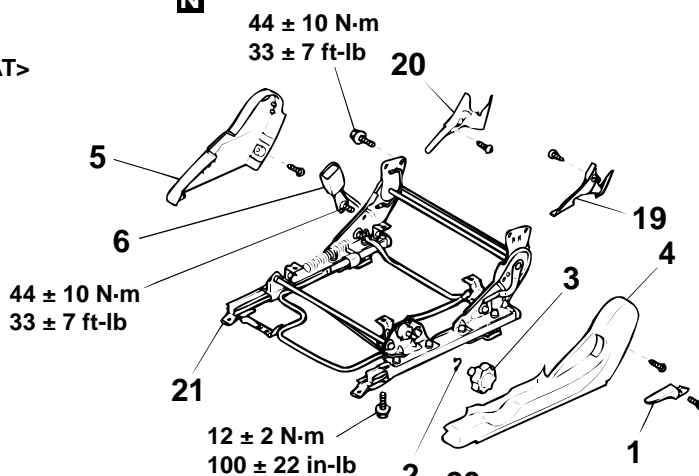
**WARNING**

Do not disassemble a front seatback assembly with built-in side air bag module.

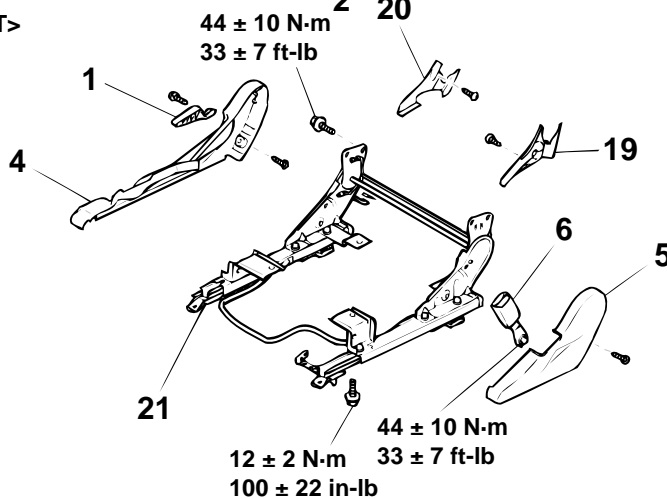
<WITHOUT POWER SEAT>



<DRIVER'S SEAT>



<PASSENGER'S SEAT>



TSB Revision

**DISASSEMBLY STEPS**

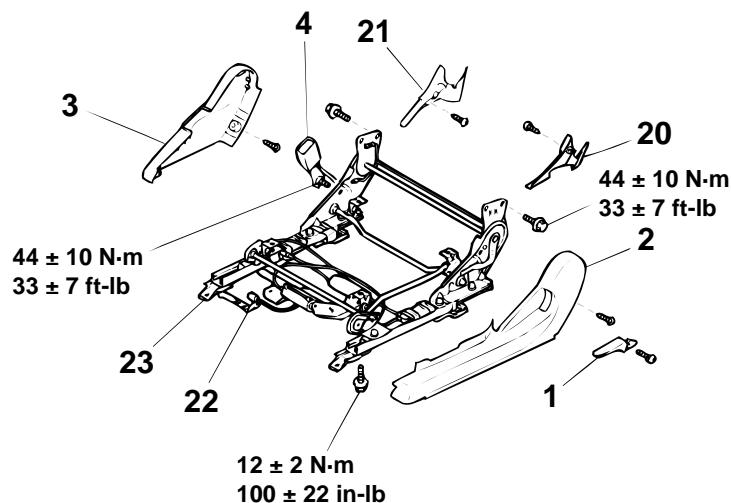
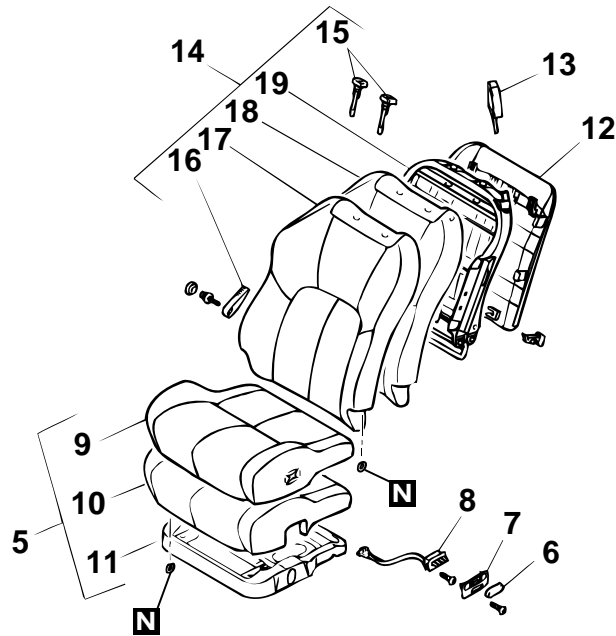
1. RECLINING ADJUSTER KNOB
2. CLIP <DRIVER'S SEAT>
3. HEIGHT ADJUSTER KNOB  
<DRIVER'S SEAT>
4. FRONT SEAT SHIELD COVER
5. FRONT SEAT SHIELD COVER
6. INNER SEAT BELT
7. FRONT SEAT CUSHION ASSEMBLY
8. FRONT SEAT CUSHION COVER
9. FRONT SEAT CUSHION PAD
10. FRONT SEAT CUSHION FRAME
11. FRONT SEATBACK PANEL
12. SEAT BELTGUIDE <ECLIPSE  
SPYDER ONLY>

**DISASSEMBLY STEPS (Continued)**

13. FRONT SEATBACK ASSEMBLY
14. HEADRESTRAINT GUIDE
15. LUMBAR SUPPORT KNOB  
<DRIVER'S SEAT>
16. FRONT SEATBACK COVER
17. FRONT SEATBACK PAD
18. FRONT SEATBACK FRAME  
<VEHICLES WITHOUT SRS SIDE  
AIR BAG>
19. FRONT SEAT INNER COVER
20. FRONT SEAT INNER COVER
21. FRONT SEAT ADJUSTER  
ASSEMBLY

<<A>>

## &lt;POWER SEAT&gt;



AC003049AB

**DISASSEMBLY STEPS**

1. RECLINING ADJUSTER KNOB
2. FRONT SEAT SHIELD COVER
3. FRONT SEAT SHIELD COVER
4. INNER SEAT BELT
5. FRONT SEAT CUSHION ASSEMBLY
6. FRONT SEAT SLIDE ADJUSTER LEVER
7. GARNISH
8. POWER SEAT SWITCH
9. FRONT SEAT CUSHION COVER
10. FRONT SEAT CUSHION PAD
11. FRONT SEAT CUSHION FRAME
12. FRONT SEATBACK PANEL
13. SEAT BELT GUIDE <ECLIPSE SPYDER ONLY>

**DISASSEMBLY STEPS (Continued)**

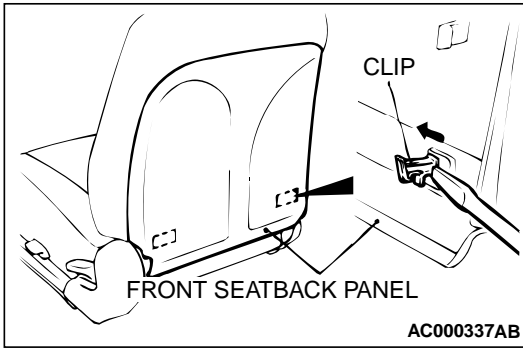
14. FRONT SEATBACK ASSEMBLY
15. HEADRESTRAINT GUIDE
16. LUMBAR SUPPORT KNOB
17. FRONT SEATBACK COVER
18. FRONT SEATBACK PAD
19. FRONT SEATBACK FRAME  
<VEHICLES WITHOUT SRS SIDE AIR BAG>
20. FRONT SEAT INNER COVER
21. FRONT SEAT INNER COVER
22. POWER SEAT HARNESS
23. POWER SEAT ADJUSTER ASSEMBLY

&lt;&lt;A&gt;&gt;

**DISASSEMBLY SERVICE POINT**

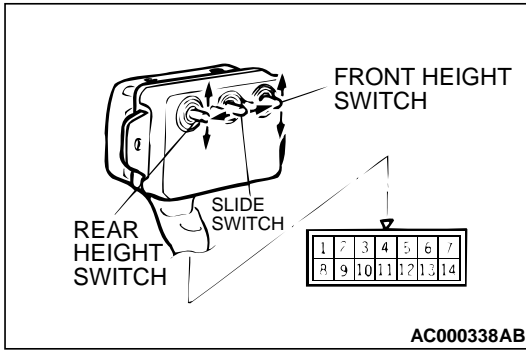
**<<A>> FRONT SEATBACK PANEL REMOVAL**

1. Using a screwdriver or similar tool, push in the clip of the front seatback panel lower portion to remove it.
2. Pull down the front seatback panel to remove it.



**INSPECTION**

**POWER SEAT SWITCH CONTINUITY CHECK**

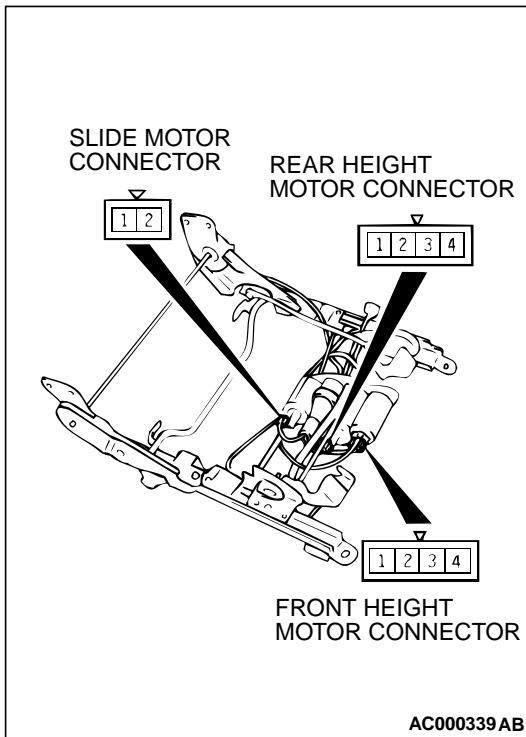


| SWITCH POSITION     |          | TESTER CONNECTION | SPECIFIED CONDITION |
|---------------------|----------|-------------------|---------------------|
| Slide switch        | Forward  | 2-3, 4-14         | Continuity          |
|                     | Backward | 1-4, 3-14         | Continuity          |
| Front height switch | Up       | 9-10, 11-14       | Continuity          |
|                     | Down     | 8-11, 10-14       | Continuity          |
| Rear height switch  | Up       | 6-12, 7-14        | Continuity          |
|                     | Down     | 5-7, 12-14        | Continuity          |
| All switches        | OFF      | -                 | No continuity       |

**POWER SEAT MOTOR OPERATION CHECK**

Inspect the operation of each motor according to the following procedures.

1. Disconnect the connector for each motor.
2. When the battery is connected directly to the motor terminals, check if the motors run smoothly, and check if each setting mechanism runs in the direction shown in the table below for each motor.
  - (1) Connect the battery power source to the terminal 3 and ground the terminal 4 for the front/rear height down side and connect the battery power source to the terminal 4 and ground the terminal 3 for the front/rear height up side.
  - (2) Connect the battery power source to the terminal 1 and ground the terminal 2 for the slide backward side and connect the battery power source to the terminal 2 and ground the terminal 1 for the slide forward side.
3. If there is an abnormality, replace the power seat adjuster assembly.



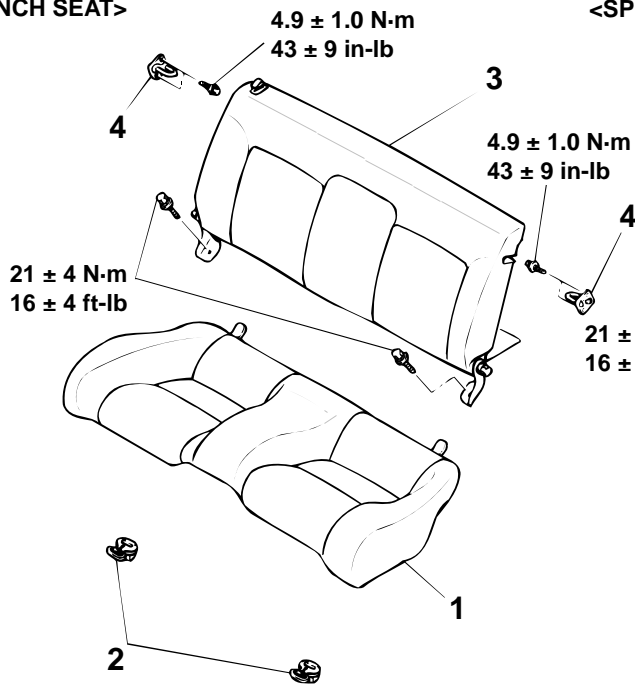
# REAR SEAT ASSEMBLY

## REMOVAL AND INSTALLATION

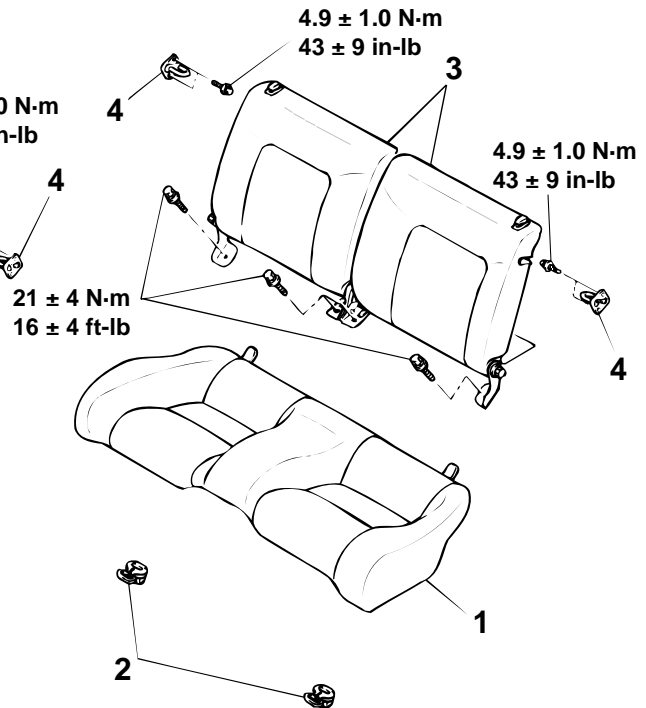
M1522001800060

### <ECLIPSE>

#### <BENCH SEAT>



#### <SPLIT SEAT>



AC003040AB

<<A>>

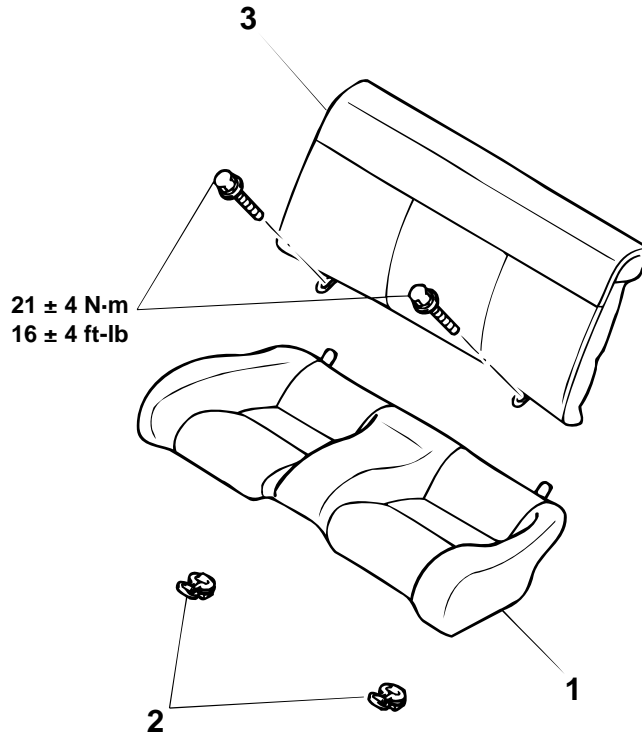
#### REMOVAL STEPS

1. REAR SEAT CUSHION
2. REAR SEAT STOPPER
3. REAR SEATBACK

#### STRIKER REMOVAL STEPS

- QUARTER TRIM, LOWER (REFER TO [P.52A-10.](#))
- 4. STRIKER

<ECLIPSE SPYDER>



AC003050AB

<<A>>

**REMOVAL STEPS**

1. REAR SEAT CUSHION

**REMOVAL STEPS (Continued)**

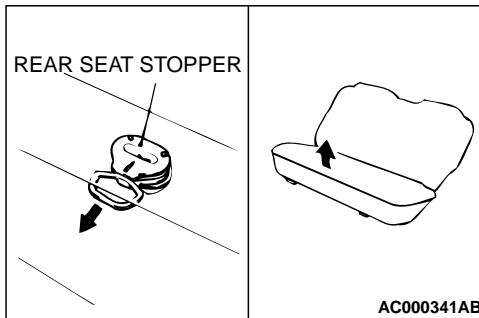
2. REAR SEAT STOPPER
3. REAR SEATBACK

>>A<<

**REMOVAL SERVICE POINT**

**<<A>> REAR SEAT CUSHION REMOVAL**

While pulling the rear seat stopper pulled, lift up the seat cushion to remove it.

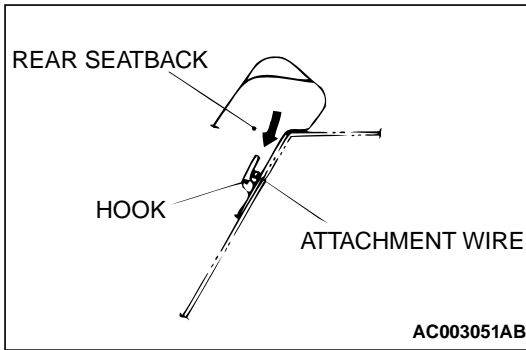




**INSTALLATION SERVICE POINT**

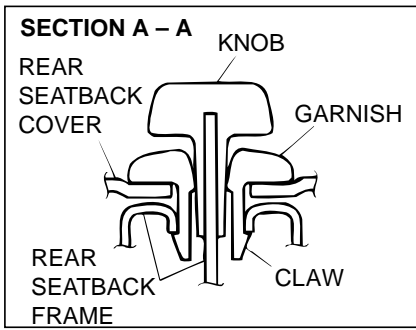
**>>A<< REAR SEATBACK INSTALLATION**

Push the rear seatback in the direction indicated in the illustration; then securely attach the attachment wire to the body side hook and install the rear seatback.

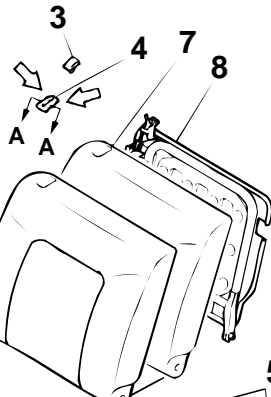


DISASSEMBLY AND ASSEMBLY

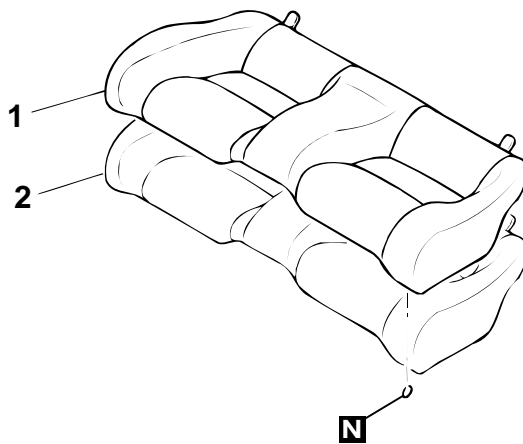
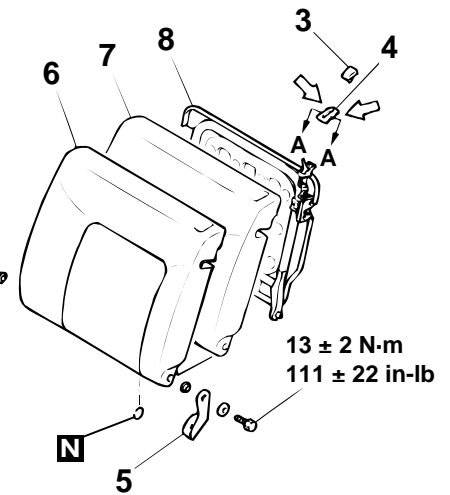
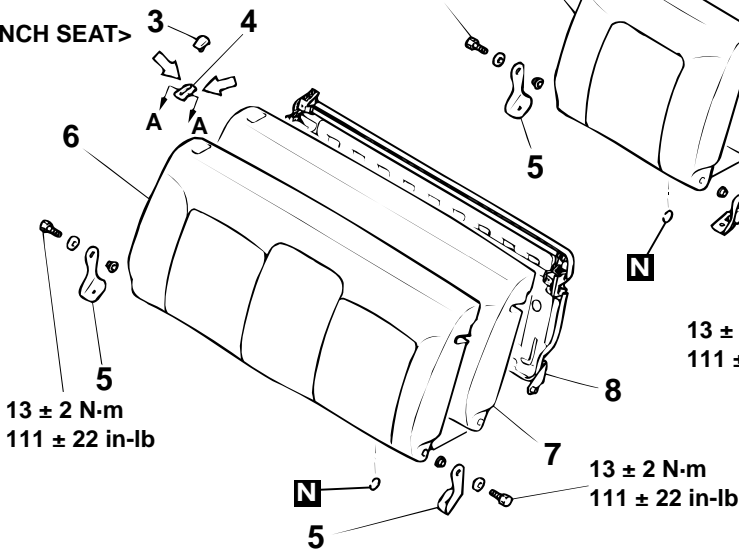
<ECLIPSE>



<SPLIT SEAT>



<BENCH SEAT>



NOTE  
←: Claw position

AC003041AB

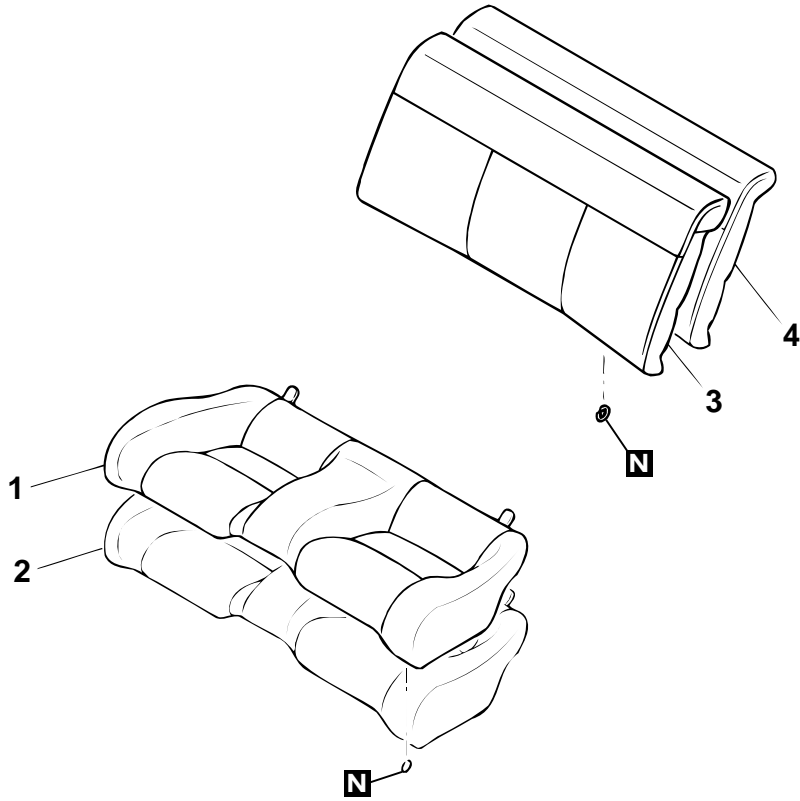
DISASSEMBLY STEPS

1. REAR SEAT CUSHION COVER
2. REAR SEAT CUSHION PAD
3. KNOB
4. GARNISH

DISASSEMBLY STEPS (Continued)

5. REAR SEATBACK HINGE
6. REAR SEATBACK COVER
7. REAR SEATBACK PAD
8. REAR SEATBACK FRAME

<ECLIPSE SPYDER>



AC003052AB

**DISASSEMBLY STEPS**

1. REAR SEAT CUSHION COVER
2. REAR SEAT CUSHION PAD

**DISASSEMBLY STEPS (Continued)**

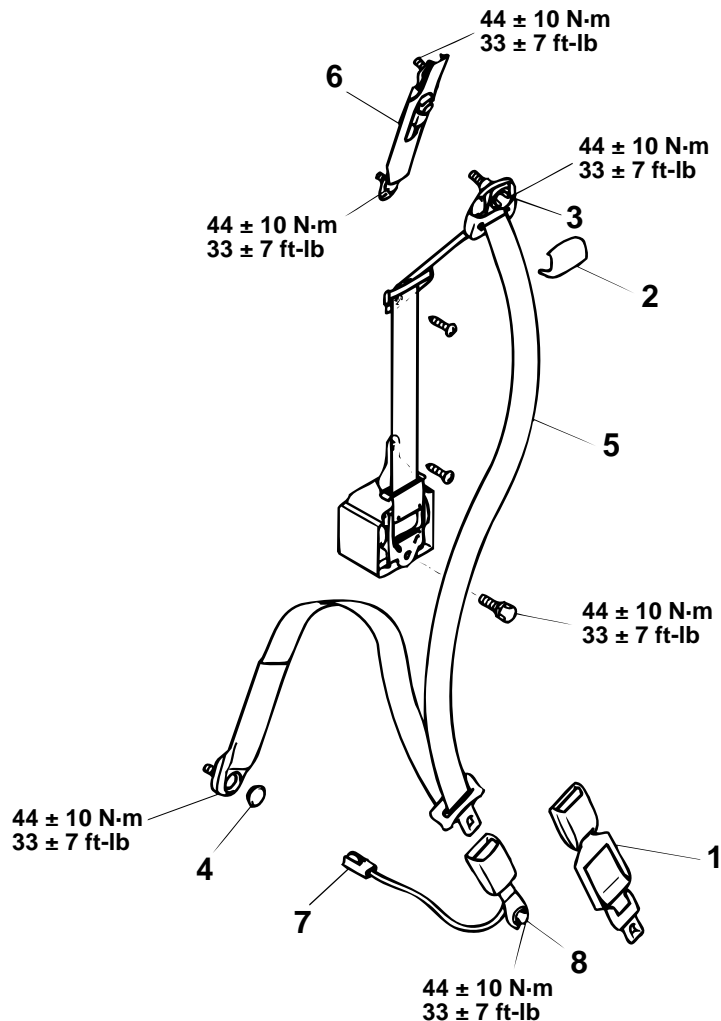
3. REAR SEATBACK COVER
4. REAR SEATBACK PAD

## FRONT SEAT BELT

## REMOVAL AND INSTALLATION

M1523001300068

&lt;ECLIPSE&gt;



AC000343AB

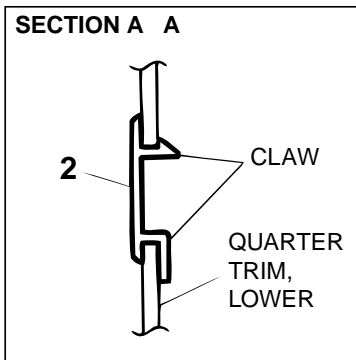
1. EXTENDER SEAT BELT ASSEMBLY\*  
**OUTER SEAT BELT REMOVAL STEPS**
2. SEAT BELT SASH GUIDE COVER
  3. SEAT BELT ANCHOR PLATE
  4. ANCHOR PLATE COVER CAP
    - QUARTER TRIM, LOWER (REFER TO P.52A-10.)
  5. OUTER SEAT BELT
    - QUARTER TRIM, UPPER (REFER TO P.52A-10.)
- >>A<< 6. ADJUSTABLE SEAT BELT ANCHOR

**INNER SEAT BELT REMOVAL STEPS**

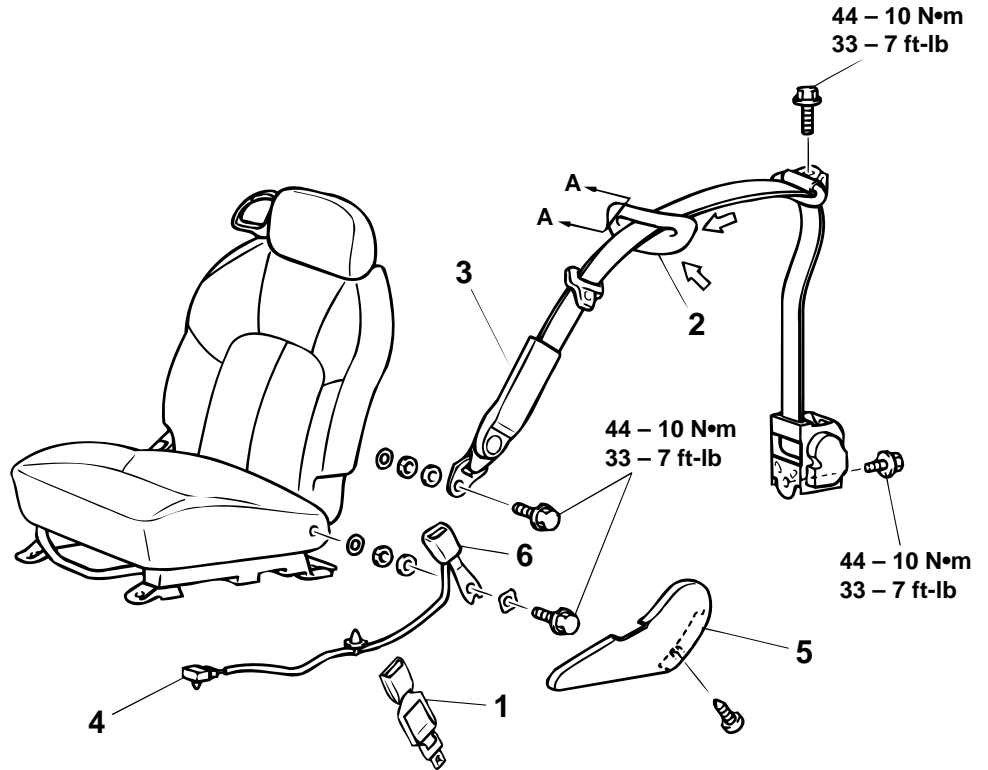
- FRONT SEAT ASSEMBLY (REFER TO P.52A-17.)
- 7. HARNESS CONNECTOR (DRIVER'S SIDE)
- FRONT SEAT SHIELD COVER (REFER TO P.52A-18.)
- 8. INNER SEAT BELT

NOTE: \*Equipped if necessary (for particular vehicle usage)

<ECLIPSE SPYDER>



NOTE  
←: Claw position



AC003053AB

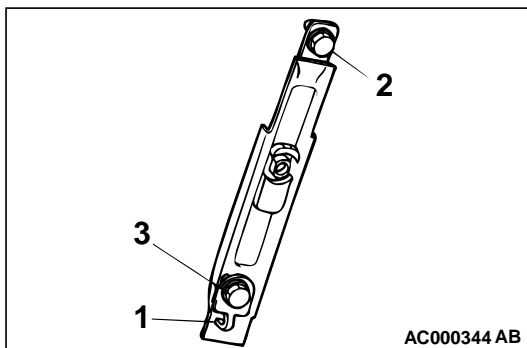
1. EXTENDER SEAT BELT ASSEMBLY\*  
**OUTER SEAT BELT REMOVAL STEPS**
2. SEAT BELT GUIDE
  - QUARTER TRIM, LOWER (REFER TO P.52A-10.)
  3. OUTER SEAT BELT
  5. OUTER SEAT BELT

- INNER SEAT BELT REMOVAL STEPS**
- FRONT SEAT ASSEMBLY (REFER TO P.52A-17.)
  - 4. HARNESS CONNECTOR (DRIVER'S SIDE)
  - 5. FRONT SEAT SHIELD COVER (REFER TO P.52A-18.)
  - 6. INNER SEAT BELT

NOTE: \*Equipped if necessary (for particular vehicle usage)

**INSTALLATION SERVICE POINT**

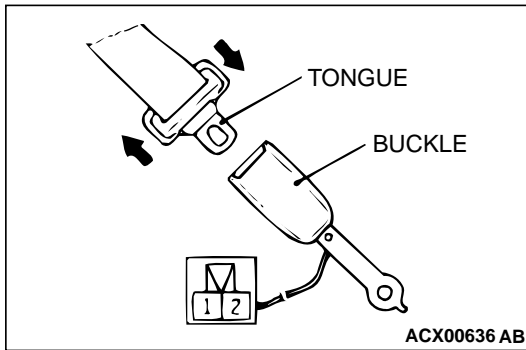
>>A<< **ADJUSTABLE SEAT BELT ANCHOR INSTALLATION**  
Observe the order shown.



## INSPECTION

M1523001400065

## SEAT BELT BUCKLE SWITCH CONTINUITY CHECK



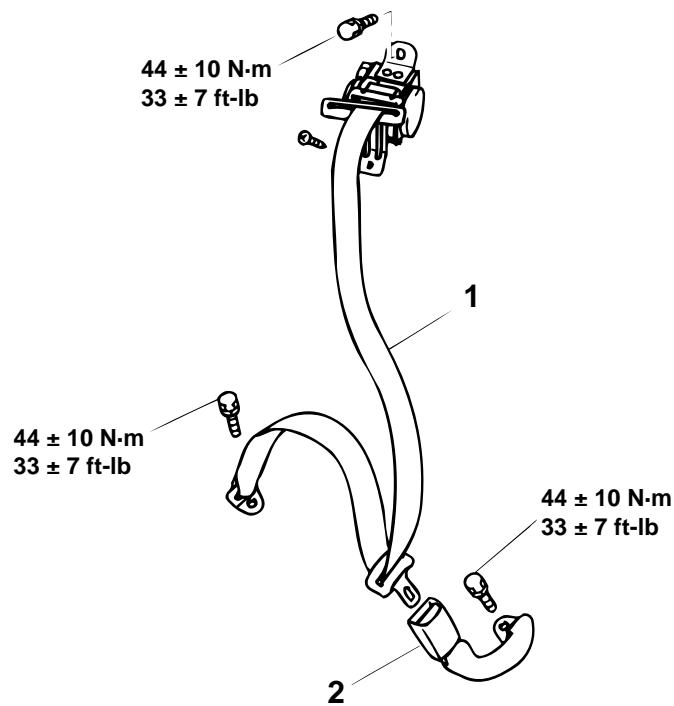
| ITEMS                | TESTER CONNECTION | SPECIFIED CONDITION |
|----------------------|-------------------|---------------------|
| Fastened seat belt   | –                 | No continuity       |
| Unfastened seat belt | 1 – 2             | Continuity          |

## REAR SEAT BELT

## REMOVAL AND INSTALLATION

M1523001600069

&lt;ECLIPSE&gt;



AC003042AB

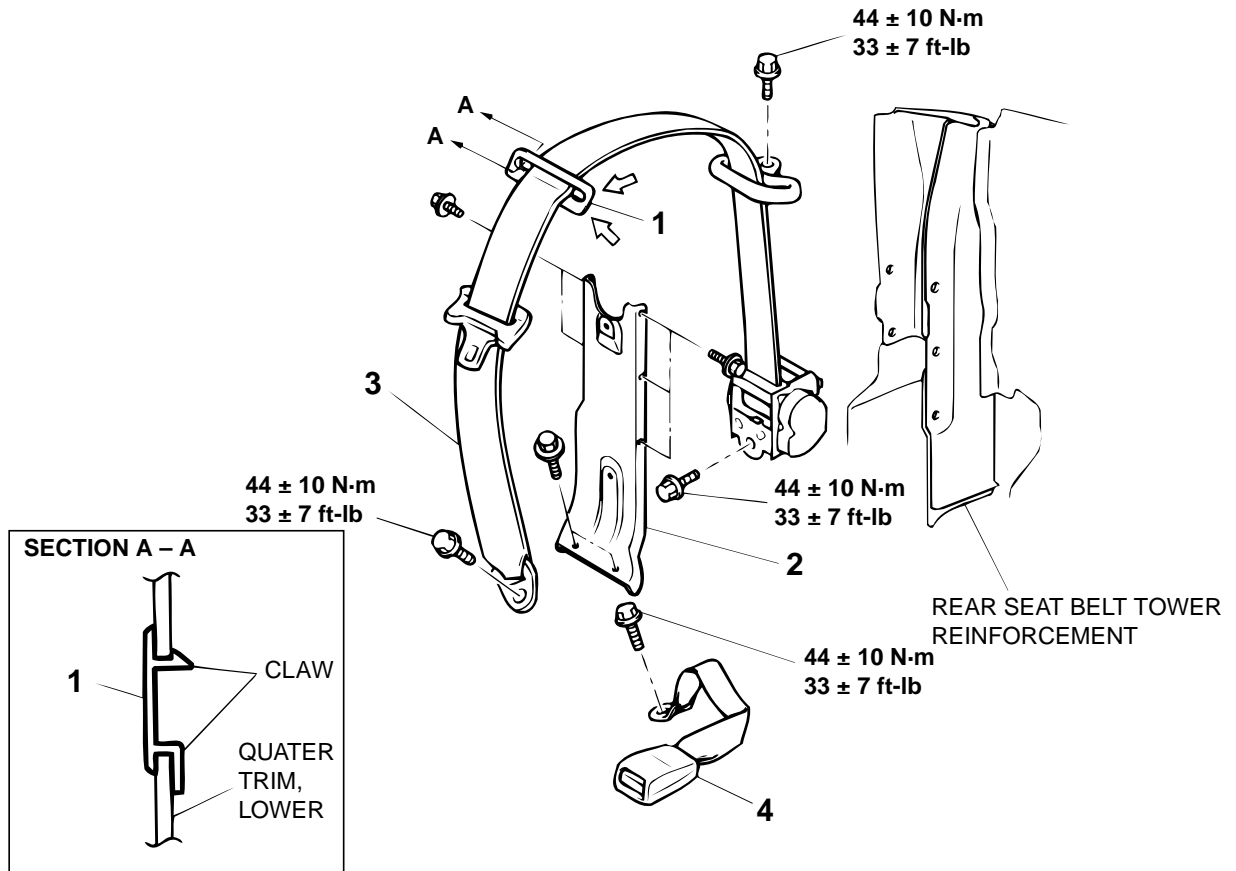
OUTER SEAT BELT REMOVAL  
STEPS

- REAR SEAT CUSHION (REFER TO [P.52A-23.](#))
  - REAR SEATBACK (REFER TO [P.52A-23.](#))
  - QUARTER TRIM, LOWER (REFER TO [P.52A-10.](#))
1. OUTER SEAT BELT

INNER SEAT BELT REMOVAL  
STEPS

- REAR SEAT CUSHION (REFER TO [P.52A-23.](#))
2. INNER SEAT BELT

<ECLIPSE SPYDER>



NOTE  
 ←: Claw position

AC003054AB

**OUTER SEAT BELT REMOVAL  
STEPS**

- REAR SEAT CUSHION (REFER TO [P.52A-23.](#))
- REAR SEATBACK (REFER TO [P.52A-23.](#))
- 1. SEAT BELT GUIDE
- QUARTER TRIM, LOWER (REFER TO [P.52A-10.](#))

**OUTER SEAT BELT REMOVAL  
STEPS (Continued)**

- 2. OUTER SEAT BELT
  - 3. REAR SEAT BELT TOWER, FRONT
- INNER SEAT BELT REMOVAL  
STEPS**
- REAR SEAT CUSHION (REFER TO [P.52A-23.](#))
  - 4. INNER SEAT BELT

**SPECIFICATIONS****FASTENER TIGHTENING SPECIFICATIONS**

M1521004100067

| <b>ITEM</b>                             | <b>SPECIFICATION</b>         |
|---|------------------------------|
| Adjustable seat belt anchor bolt        | 44 ± 10 N·m (33 ± 7 ft-lb)   |
| Catch bolt                              | 12 ± 2 N·m (100 ± 22 in-lb)  |
| Front inner seat belt bolt              | 44 ± 10 N·m (33 ± 7 ft-lb)   |
| Front outer seat belt anchor plate bolt | 44 ± 10 N·m (33 ± 7 ft-lb)   |
| Front outer seat belt bolt              | 44 ± 10 N·m (33 ± 7 ft-lb)   |
| Front seat bolt                         | 44 ± 10 N·m (33 ± 7 ft-lb)   |
| Front seat nut                          | 30 ± 5 N·m (22 ± 4 ft-lb)    |
| Front seat reclining adjuster bolt      | 44 ± 10 N·m (33 ± 7 ft-lb)   |
| Rear inner seat belt bolt               | 44 ± 10 N·m (33 ± 7 ft-lb)   |
| Rear outer seat belt anchor plate bolt  | 44 ± 10 N·m (33 ± 7 ft-lb)   |
| Rear outer seat belt bolt               | 44 ± 10 N·m (33 ± 7 ft-lb)   |
| Rear seatback bolt                      | 21 ± 4 N·m (16 ± 4 ft-lb)    |
| Rear seatback hinge bolt                | 13 ± 2 N·m (111 ± 22 in-lb)  |
| Striker bolt                            | 4.9 ± 1.0 N·m (44 ± 8 in-lb) |
| Tether anchor bolt                      | 22 ± 4 N·m (16 ± 3 ft-lb)    |

|              |
|--------------|
| TSB Revision |
|--------------|